

COA ENDOWMENT REPORT



FY2015



College of the Atlantic Mission

College of the Atlantic enriches the liberal arts tradition through a distinctive educational philosophy — human ecology. A human ecological perspective integrates knowledge from all academic disciplines and from personal experience to investigate — and ultimately improve — the relationships between human beings and our social and natural communities. The human ecological perspective guides all aspects of education, research, activism, and interactions among the college's students, faculty, staff, and trustees. The College of the Atlantic community encourages, prepares, and expects students to gain expertise, breadth, values, and practical experience necessary to achieve individual fulfillment and to help solve problems that challenge communities everywhere.

College of the Atlantic Vision

The faculty, students, trustees, staff, and alumni of College of the Atlantic envision a world where people value creativity, intellectual achievement, and the diversity of nature and human cultures. With respect and compassion, individuals will construct meaningful lives for themselves, gain appreciation for the relationships among all forms of life, and safeguard the heritage of future generations.

Table of Contents

The Anne T. and Robert M. Bass Chair in Earth Systems and Geosciences	4
The Richard J. Borden Chair in the Humanities	5
The Rachel Carson Chair in Human Ecology	6
The William H. Drury, Jr. Chair in Evolution, Ecology and Natural History	7
The William H. Drury Research Fund	
The Charles Eliot Chair in Ecological Planning, Policy and Design	8
The Steven K. Katona Chair in Marine Studies	9
The Elizabeth Battles Newlin Chair in Botany	10
The Partridge Chair in Food and Sustainable Agriculture Systems	11
The David Rockefeller Family Chair in Ecosystem Management and Protection	12
The T.A. Cox Fund in Ecosystem Management and Protection	
The Sharpe-McNally Chair in Green and Socially Responsible Business	13
Lisa Stewart Chair in Literature and Women's Studies	14
The Allan Stone Chair in the Visual Arts	15
The James Russell Wiggins Chair in Government and Polity	16
The Philip Geyelin Fund for Government and Polity	
Endowed Scholarships	17
The Beinecke Student Travel and Living Assistance Fund	24
Kathryn W. Davis Global and Civic Engagement Fund for Peace	25
The Shelby Cullom Davis Faculty International Studies Fund	26
The Shelby Cullom Davis Student International Studies Fund	27
The Faculty/Staff Enrichment Fund	28
The Elizabeth A. and Henry B. Guthrie Chemistry Enhancement Fund	29
The Barbarina M. and Aaron J. Heyerdahl Beech Hill Farm Endowment Fund	29
The Robert P. and Arlene Kogod Visiting Artist Fund	30
The Fund for Maine Islands	31
The McCormick Library Director Fund	32
The Rabineau Student Senior Project and Professional Development Fund	33
The Peggy Rockefeller Farms Endowment Fund	33
The Doug Rose GIS Enhancement Fund	34
The Maurine and Robert Rothschild Student-Faculty Collaborative Research Fund	34
The Elizabeth Thorndike Senior Class Book Fund	35
COA's Physical Plant Funds	36
General Unrestricted Endowment	inside back cover
New Endowment Funds	inside back cover

Letter from the Dean of Institutional Advancement

Lynn Boulger

The cost of higher education has been much in the news lately - and for good reason. Who isn't stunned by the \$60,000 or more cost of tuition, room, and board at private four-year colleges and universities? This, at a time when the median income for an American family is \$50,000. Who can pay it? The answer to that question is one of the two facts rarely mentioned in these discussions and news reports.

The first fact is that only about 15% of college attendees actually pay the sticker price of college tuition. More than 85% percent of all students receive aid packages in the form of grants, scholarships, and yes, loans. College is made affordable to the vast majority of students who apply because of the vast amount of support being given.

The second fact is that charitable giving supplies a significant portion of those hefty aid packages. The amount of philanthropic support involved in higher education is staggering. Americans donated a record \$52.07 billion to education in 2013. In fact, of all the transformational gifts (\$10 million or more) in America between 1995 and 2000, higher education received the most of any sector, with 56 percent of all gifts or \$10 billion dollars total. Individual philanthropy in the US supports the creation of new academic programs, science buildings, arts studios, athletic facilities, endowed chairs, and scholarships (Tobin *et al.*, 2003).

College of the Atlantic is committed to making higher education attainable for all students, regardless of their socioeconomic backgrounds. More than 90% of COA students receive financial assistance in some form.

Ursa Beckford '17 was homeschooled on a family farm in Clifton, Maine. Amber Igasia from Wellington, New Zealand wanted to come to the US to study after United World College. Shlomit Auciello '17 is a 62-year-old grandmother from Rockland, Maine. Ariana Rambach, from Ashland, Oregon, works at the George B. Dorr Museum of Natural History doing education and outreach. Each of these students was able to attend COA because he or she received scholarship aid.

COA's endowment provides a host of learning opportunities and program enhancements for students and faculty. An endowed fund from Kathryn W. Davis sends students all over the world to conduct research, present papers at conferences, and study abroad. Faculty are able to stay abreast of best practices and new developments in their fields through professional development and travel funds. Visiting artists are hired through the Kogod Visiting Artists fund. Our buildings are maintained in part through endowed funds.

The college is so small relative to other institutions that these endowed gifts matter to everyone who works, studies, or teaches here. In twenty years, our endowment has grown from \$2.5 million in 1995 to over \$45 million today. Thanks to you.

Thank you so much for your investment in the future of College of the Atlantic and the future of our sustainable world. Our students and alumni are making a difference here on the island and throughout the world in projects large and small—from conservation of marine habitat to the education of our children to sustainably raising our food to negotiating for climate change policy at the United Nations. Thanks to you, our future looks a whole lot brighter.



Lynn Boulger



Please note: Most of the annual fund allocations are spent during the fiscal year, but typically about ten funds have unexpended balances which are carried forward to the next fiscal year. For these funds, the descriptions of last year's expenses will not match the allocations.

From the Administrative Dean & CFO

Andrew S. Griffiths

At the end of our fiscal year 2015, our endowment investments totaled \$45.9 million, an increase of \$1.7 million from the balance at the end of fiscal year 2014. During fiscal year 2015, we had gains and earnings of \$3.0 million, received and invested new gifts of \$0.7 million, and allocated about \$1.5 million to the operation of the College. More than half of this allocation was to the academic program, including the funding of thirteen faculty chairs. The balance was allocated to the general operating budget, primarily to scholarships.

Overall the endowment investments consist of over seventy separately tracked funds, including chairs, specific scholarships, programs restricted to specific purposes, and the general endowment. These funds are invested under the guidance of the college investment committee which has established a range of 60–75% to be allocated to equities and the balance in fixed income. The equities are managed by two investment firms, Eagle Capital Management and Gardner, Russo, Gardner. The fixed assets are divided between the management of Eaton Vance and investments held by local banks. Much of the growth in the investments last year was due to the equity gains of Eagle Capital which had a 12.9% return, exceeding the S&P 500 benchmark of 7.4%. The COA investment committee also established spending policies, which currently include an annual allocation of 4.8% of the trailing six quarter average balance.¹

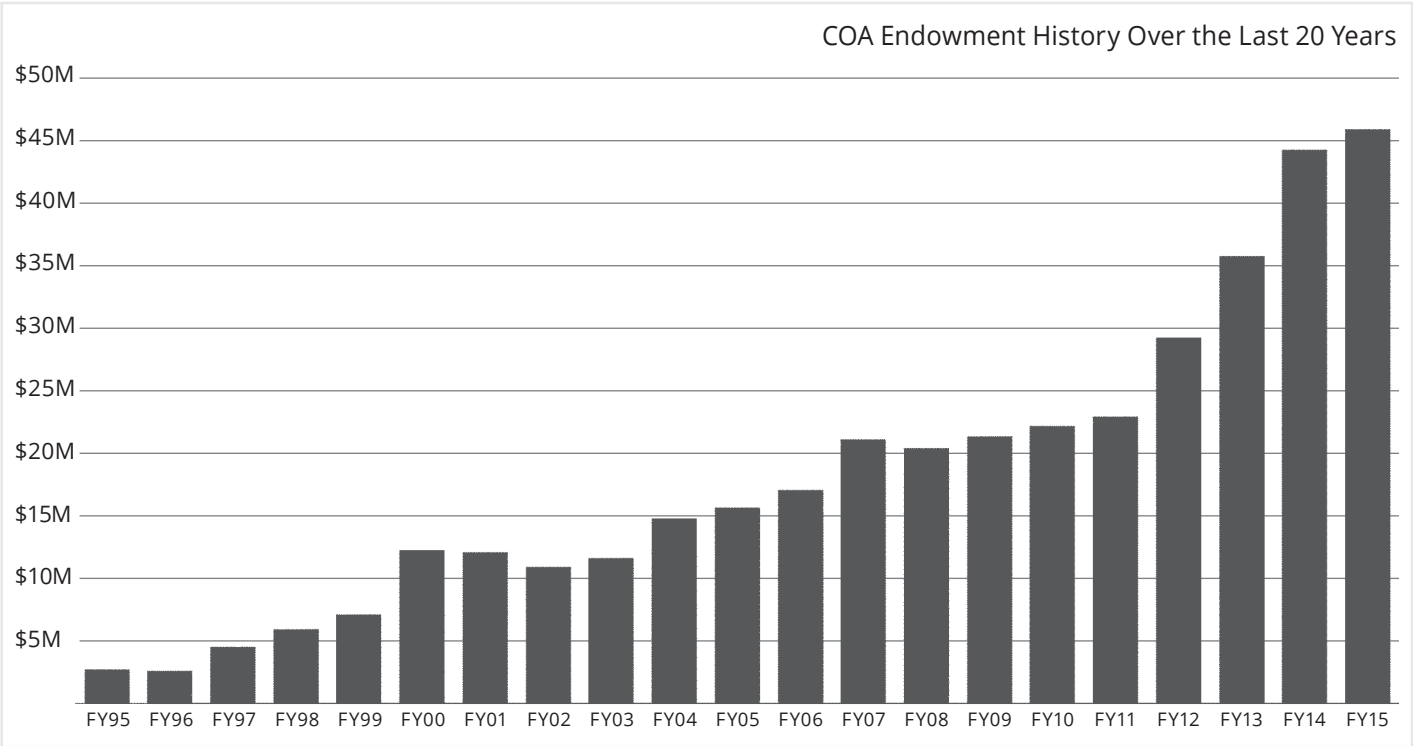
Over the last ten years, the endowment has grown from \$13 million to its current value of \$45.9 million, providing substantial support to the college operations. Despite the setback in 2008–2009 when all college endowments were hit by the stock market decline, our investments have generally outperformed the market and have been recovering substantially. Over the last five years, each of our equity managers has out-performed the market. Similarly, our internally-managed fixed income investments performed comparably to bond indices.

In addition to our endowment investments, the College has invested four restricted funds:

- \$3.8 million in the "Stanford KWD Fund," an internally established fund to support debt service on bonds.
- \$1.1 million to establish an endowment for a joint project with the Island Institute.
- \$690 thousand in the investment of a portion of a grant from the Partridge Foundation to support scholarships and sustainable food programs at COA.
- \$500 thousand for potential investment in future student housing.

As the endowment has grown, the Investment Committee recommended the engagement of a consultant to analyze the investments and propose additional managers in order to diversify. At our recent July meeting the Trustees approved the selection of Cambridge Associates, after the committee had engaged in a thorough selection process. From preliminary discussions with Cambridge Associates, we expect significant changes in the portfolio, with the addition of different categories of investment and additional managers.

1. Most of the annual fund allocations are spent during the fiscal year, but typically about ten funds have unexpended balances which are carried forward to the next fiscal year. For these funds, the descriptions of last year's expenses will not match the allocations.



The Anne T. and Robert M. Bass Chair in Earth Systems and Geosciences

Chair Holder: Sarah Hall, PhD

Beginning Fund Balance Net	\$2,115,996
Return on Investments	\$122,967
Contributions	—
Less Allocations/Withdrawals	-\$104,425
Ending Fund Balance	\$2,134,538

During my third year at COA as the Anne T. and Robert M. Bass Chair of Earth Systems and Geosciences, I taught a total of 50 students, advised four students in term-long or summer independent study projects, and mentored eleven student advisees. I had the pleasure of working with and being supported by two excellent teaching assistants, both students I had taught during the previous year.

Classes included Geology of MDI where students completed weekly field activities on MDI and participated in one long-weekend field trip to Borestone Mountain in north-central Maine; Human Ecology Core Course; Natural Resources, which introduces students to the processes that contribute to resource (rock, mineral, fossil-fuel, water) formation and geographic distribution; South American Earth Systems, a seminar style course wherein students read and synthesized scientific papers every week. We focused on one study area, the Cordillera Blanca of northern Peru. Following the seminar, three students traveled to this region with me for a 2-week field trip! And finally, Seminar on Climate Change a new course added mainly due to student interest. To fortify my weekly lectures, I established a climate change seminar where I brought in experts to give weekly talks on different aspects of the subject. Following each talk, students in the class escorted the speaker to dinner where they continued to ask them questions about the science and also about their path to becoming a climate scientist.



I was an advisor on four independent study projects:

- During the summer 2015, Spencer Gray '17 mapped the bedrock of both islands and constructed the first geologic maps of the islands in the COA GIS laboratory. He was partially supported by a Maine Space Grant Scholarship.
- David Niemann '18 prepared maps showing snow cover for specific locations on the Cox Protectorate including one state survey site used by state officials to build melt and flood prediction maps.
- Connor O'Brien '17 built the first Geology exhibit for COA's Dorr Natural History Museum! It includes a map, text about local field sites and rock forming processes, and rock specimens for hands-on observations.
- Alba Mar Rodriguez Padilla '18 completed background research and a hazards assessment for the El Misti volcano in Arequipa, Peru. While in Peru she met with local volcanologists and she prepared a report of the study for the Instituto Geologico Minero y Metalúrgico in Peru.

Professional Work: I attended the American Geophysical Union Annual Fall Meeting in San Francisco, CA where I presented on the interdisciplinary courses designed around the Davis Family Foundation funding of 2012–2014. I co-authored work presented at various international conferences during winter 2014–2015. During February 2015, I traveled to France to work with colleagues at the University of Grenoble. I was invited to give a talk at ISTERre, University of Grenoble, France on my work in Peru, "Surface processes and the morphology of the Cordillera Blanca." The work with colleagues has led to the submission of two new publications.

I applied for a collaborative geoscience education grant from the NSF to develop a professional development program with field studies, targeted skill building, and networking for Environmental STEM students from College of the Atlantic, University of San Francisco, and Mt. San Antonio College. (funded; \$340,783; 2015–2018).

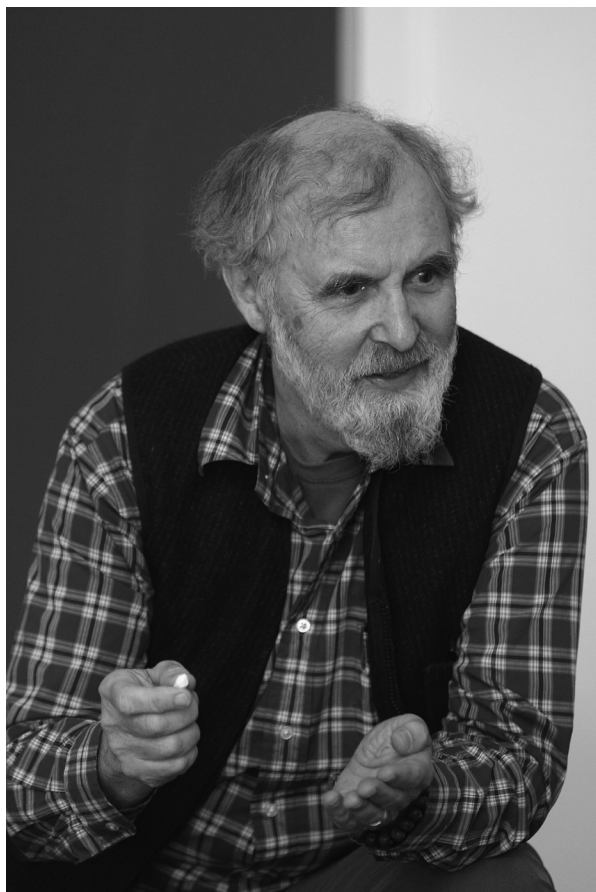
I was asked to co-author a module, "Surface Process Hazards—Mass Wasting" for an introductory geoscience course as part of a funded NSF initiative: GETSI—GEodesy Tools for Societal Issues with collaborator, Rebecca Walker.

Service: MAP Campus Strategic Plan, faculty representative
Campus Planning and Building Committee
International Studies Committee, minute taker
Coffee and Conversation with Dr. Stephen Hornsby, August 2015

The Richard J. Borden Chair in the Humanities

Chair Holder: John Visvader, PhD

Beginning Fund Balance Net	\$1,409,401
Return on Investments	\$81,306
Contributions	\$111,498
Less Allocations/Withdrawals	-\$103,458
Ending Fund Balance	\$1,498,747



The FY15 school year was my first year of teaching 3/5ths time which has worked out to be one course each of the three terms plus the normal administrative work. I have found that one course a term allows me to put more time into the classes I teach as well as giving me more time for writing.

My three classes were the Mystics, Introduction to the Philosophy of Mind and the Mountain Poets of China and Japan. I tried to cover a wide range of subject matter in these offerings—the philosophy of comparative religions, analytical analysis of different theories of the mind and the culture and poetry of China and Japan. Each of the classes was strongly oversubscribed.

I also worked on my new class for this Fall term *Philosophy and Cosmology*. This course has proven popular and has a waiting list of more than 30 students. I have taken advantage of the generous Borden chair budget to purchase two telescopes to use for night time viewing of the deep sky as a supplement to our discussion of current cosmological theories.

I enjoyed giving two public presentations of some of my scholarly work: the first a lecture on Confucianism and Daoism to an audience of over 300 people at the University of Maine's Honors Program and a reading of my paper "The Pseudo-people: A Human Ecology of Intelligent Machines" at the meeting of the Society for Human Ecology at COA.

Other guest lectures included presentations at three regular COA classes, a talk on *Chinese Gardens* to a design class, a talk on the *Philosophy of Time* for a 4-D art class and a lecture on *Western Intellectual History* for a class on the Renaissance.

The Borden Chair budget also helped me pay various expenses in running the weekly Human Ecology Forum. I was able to give small honorariums and aid in travel expenses for speakers who came from outside of the COA community. This year the forum covered a large range of people and subjects including talks by Ambassador Donald Gregg, Buddhist scholars Richard Wood and Rita Gross, Kenyan Senator Peter Anyang' Nyong'o, Jay McNally '84, Peter Sly, talk and workshop by Tai Chi teacher Peter Wayne '83, art presentations by Ashley Bryan, Susan Dowling, Catherine Clinger, poetry readings by Gary Lawless, Tim Liardet, Jennifer Militello and Buddhist poet and actor Michael O'Keefe as well as a variety of reports on projects and activities by COA students, faculty and staff.

The Rachel Carson Chair in Human Ecology

Chair Holder: Richard J. Borden, PhD

Beginning Fund Balance	\$1,208,014
Net Return on Investments	\$70,207
Contributions	—
Less Allocations/Withdrawals	-\$53,307
Ending Fund Balance	\$1,224,914

This was an active and rewarding year. In fall, Ken Hill and I co-organized the *Human Ecology Core Course* for all incoming, first-year students. In winter, I taught *Personality and Social Development* and *Contemporary Psychology: Body, Mind and Soul*; and in spring term offered my *Popular Psychology* class, team-taught *Community Planning and Decision Making* with Isabel Mancinelli, and again co-organized (with John Anderson) the 2015 Human Ecology Core Course. I supervised three senior projects, one independent study and was a faculty reader for six seniors' human ecology essays.

Other campus responsibilities included participation on Academic Affairs Committee, Center for Applied Human Ecology (CAHE), the Public Relations Officer search committee, weekly faculty meetings and All College Meetings. I took part in Family Weekend for admissions and was a Deering Common Community Center Friday Fireside Chat interviewer for Heath Cabot, who discussed her recent book, *On the Doorstep of Europe*. Later, in spring, Bill Carpenter did a fireside interview with me on my book, *Ecology and Experience: Reflections from a Human Ecological Perspective*.

Society for Human Ecology (SHE): I co-chaired the XXth International SHE Conference, "Ecological Responsibility and Human Imagination: Saving the Past—Shaping the Future," October 22–25, 2014. This was a college-wide event, in which all students and faculty participated. At the opening reception, President Darron Collins '92 PhD surprised me with a special commemorative as the "face of human ecology," which now hangs in the George B. Dorr Museum of Natural History.

I also organized a four-part symposium, Wider Points of View: Philosophy, Psychology and Ecological Visions, and later in the conference, received the society's 2014 Book Award "for distinguished scholarly work in human ecology" for *Ecology and Experience*. The book was given a very positive review in *Human Ecology Review*, and I have received dozens of wonderful emails from readers worldwide. I continue to be involved with SHE activities (with Ken Hill and others) in organizing the SHE XXI conference, Shaping a Livable Future: Research-Education-Policy, to be held in Santa Ana, CA in April 2016.

Ecological Society of America (ESA): I am a founding member, and current chair, of ESA's human ecology section. Last August in Sacramento, I was elected to the ESA Council and organized a daylong session "Human Ecology—A Gathering of Perspectives: Portraits from the Past, Prospects for the Future" for ESA's 2015 Centennial Celebration Meeting in Baltimore, MD. The session included leading historians of science, past ESA presidents, etc., and the proceedings will be published jointly in a forthcoming issue of *Human Ecology Review* (HER) by SHE/HER.

Other: I also serve on the editorial boards of *Human Ecology Review*, *COA Magazine*, and *Environment, Development and Sustainability*, and as book manuscript reviewer for University of California Press, North Atlantic Books, and Routledge. And finally, just for the fun of it, I attended the New York Center for Jungian Studies' *Jung on the Hudson* training seminar in Rhinebeck, NY in July. The weeklong event is an American Psychological Association (APA) continuing education workshop for analytically oriented scholars, psychotherapists, and professional psychologists. Yes, a very good year.



The William H. Drury, Jr. Chair in Evolution, Ecology, and Natural History

Chair Holder: John G.T. Anderson, PhD

Beginning Fund Balance	\$2,001,720
Net Return on Investments	\$116,335
Contributions	—
Less Allocations/Withdrawals	-\$88,346
Ending Fund Balance	\$2,029,709



This was a very busy year for me. In Autumn, I co-taught a "monster course" called Great West with Professor Ken Cline. This was a term-long traveling course that began in Sacramento, California and ended at the fiftieth anniversary of the National Wilderness Conference in Albuquerque, New Mexico. Along the way, Ken, the students, and I got to experience first hand the ecology, literature, and public policy conflicts of the American West. Stops included Mono Lake, Yosemite, Bryce, Zion, Arches and Death Valley.

In November, I was the invited speaker at the Rhode Island Natural History Society's fiftieth anniversary dinner where I gave a talk about my latest book, *Deep Things Out of Darkness*, on the history of natural history. I then went to Prescott, Arizona where I gave an invited lecture as part of the opening of the new Natural History Institute. In winter, I taught The History of Natural History, a Tutorial on Advanced Ornithology, and the Ecology Course. I also presented a paper at the Parks for Science/Science in Parks conference at UC Berkeley, and another paper at the Northeast Natural History conference.

In spring, I taught Animal Behavior and Wildlife Ecology, read eleven Human Ecology Essays, sponsored eight Senior Projects and two independent studies, tried to look after twenty advisees, and served on the Human Studies Review Board.

In the summer, I co-chaired the local committee of the Waterbird Society and ran the meeting here at College of the Atlantic. I also sponsored seven students working on Great Duck Island.

I also serve on the Science Advisory Board for the Hurricane Island Foundation, and am co-editing a special edition of the journal *Waterbirds* that will be on gulls and dedicated to Bill Drury.

The William H. Drury, Jr. Research Fund

As in past years, the primary expenditures associated with the Fund revolved around providing students with research opportunities on Great Duck island. Seven students worked on the island this summer and five worked on the island last summer. Besides providing boat time and covering students' living expenses, Drury Fund monies covered banding supplies and some replacement equipment including binoculars, field guides, texts, and cookware for the Alice Eno Research Station on Great Duck. Fund monies supported students Natasha Krell '16, Bik Wheeler '09, MPhil '16, and Porcia Manandhar '17 to attend and present at the Northeast Natural History Conference and Porcia to present at the Schoodic Institute Research Symposium. In addition, Fund Monies supported me in traveling to California for the Parks for Science/Science in Parks conference, where I presented work that we have been doing with Acadia National Park. As always I am extremely grateful to donors past and present who have made possible my program of work here at the College.

The Charles Eliot Chair in Ecological Planning, Policy and Design

Chair Holder: Isabel Mancinelli, MLA

Beginning Fund Balance	\$1,772,566
Net Return on Investments	\$103,017
Contributions	—
Less Allocations/Withdrawals	-\$78,233
Ending Fund Balance	\$1,797,351

Academic work: Fiscal year 2015, I taught Introduction to Arts and Design, Land Use Planning and GIS I, and a new class form of the City Advanced Seminar, which included a class field trip to NYC and presentations by the president of the Area Planning Association, the architect of the first green commercial building in NY, and project manager for Boston's Big Dig.

Students in the Land Use Planning and GIS assisted the City of Ellsworth in determining the best next steps to prepare for the increased storm water runoff occurring from the more frequent and more intense storms they are experiencing. Students gathered information on conditions and locations of existing infrastructure and identified the most critical areas to address, presented their finding to the city planners and gave them a detailed database they developed using three-dimensional modeling to predict storm water drainage and impact. The city was extremely appreciative of all the pertinent information the students gathered and provided to them.

Chair funds enabled purchase of new class resources, speakers' travel and stipend costs, and the invaluable field trip.

I also directed five independent studies:

1. A study by Christopher Alexander Pine '14 of COA's bicycle infrastructure at COA: Comprehensive report compiled and given to Campus Planning and Building Committee analyzes existing conditions and gives specific recommended improvements
2. Samuel Allen '18: computer aided drafting
3. Hannah Hirsch '16: basic woodworking
4. Boglarka Ivanegova '14 attempted to unravel the complicated history of land use in Bratislava as it transitioned from private to communal property under communism post WWII, and what has transpired since the dismantling of the Soviet Union. She developed GIS databases and maps to illustrate findings documented in several well researched papers.
5. Zuri de Souza '15 determined how readily available recyclable waste might be adapted to growing food in India's slums.

Senior projects:

- Zuri de Souza '15, Public Spaces and Their Uses
- Mairi Connelly '15, Landscape Design for the Cass/Taylor Property
- Ana Puhac '15, Human Ecology of the Urban Agriculture Movement

Community work: I chair the Beatrix Farrand Society Landscape and Garden Committee. Students toured Garland Farm and saw exhibit on a former estate at Sand Beach and full-size reproductions of Beatrix Farrand's herbarium collection. I serve on the Board of directors of the Somes Pond Center for Landscape History and brought classes to the Center to learn about native species and naturalistic design. Visiting arts faculty in sculpture used the center for term-long housing. I also serve on the COA Campus Planning and Building Committee and the Center for Applied Human Ecology.

Professional development: I attended the annual conference of the American Society of Landscape Architects and also took many continuing education courses on emerging technologies and techniques such as bike infrastructure and reducing energy demands in cities.

In January, I attended the Geodesign Summit in California and attended two days of professional presentations, met with colleagues from other universities, and former professor, Dr. Carl Steinetz, who agreed to speak as keynote for the International Society of Human Ecology conference at COA in October.



Steven K. Katona Chair in Marine Studies

Chair Holder: Sean Todd, PhD

Beginning Fund Balance	\$1,913,037
Net Return on Investments	\$111,198
Contributions	\$350
Less Allocations/Withdrawals	-\$84,415
Ending Fund Balance	\$1,940,170

This year was marked by an excellent 2014 field season that involved several students out at Mount Desert Rock, together with significant investment in teaching and administrative work both as the director of Allied Whale and the associate academic dean for graduate studies.

Over the academic year I have taught a total of ninety-five students in five classes, three independent studies, and two senior projects, while maintaining an official advisee roster of twenty-two students (including two graduate students).

Classes taught included Marine Mammal Biology, Introduction to Statistics and Research Design, Soundscape (team taught with Nancy Andrews), Biology: Form and Function (team-taught with Nishi Rajakaruna), and Marvelous Terrible Place: The Human Ecology of Newfoundland (team-taught with Natalie Springuel, Maine SeaGrant Extension officer). This latter course was notably successful, clearly the best offering of the class yet, culminating in a three-week field trip to Newfoundland and Labrador.



Professional Work: I spent December aboard the *Seabourn*, an expedition cruise vessel that completed a journey between Buenos Aires and Valparaíso via the Falkland Islands and the Antarctic Peninsula, as a guest lecturer and resident scientist representing Allied Whale's Antarctic Humpback Whale Catalogue. In addition, in February I traveled to Prescott College's Center for Cultural and Ecological Studies in Kino, Mexico, with Professor Steve Ressel to research the possibility of a team-taught class on the Gulf of California and the deserts that surround it.

Chair funds were used to help subsidize the costs of the Newfoundland class for eight students, as well as provide transport and accommodations for twelve students attending a two-day marine mammal conservation conference in Massachusetts. Funds also assisted two students in attending a marine mammal acoustics workshop and partly supported the visit to Mexico. Funds were also used for purchase of computer and camera equipment for Allied Whale.

I have helped in a number of grant initiatives designed to support Allied Whale:

- An anonymous foundation, \$40k, appl. May 2014, rec'd June 2014 (for general MDR research and photo-identification programs)
- The Mars Family, \$35k (for further renovations of facilities at Mount Desert Rock), appl. June. 2015, rec'd June 2015
- Walsh/Oceanside Properties, \$20k (towards marine mammal research)

The 2014 season at Mount Desert Rock marked the beginning of the Mars family-funded renovations. As of the close of this academic year, the generator shed was completed and functional, lacking only a few small aesthetic details. The new shed is far more robust than the previous one and should act as an excellent barrier to southern storms. The ground floor space is dedicated to a metal/wood/fiberglass shop where students can work on equipment and projects (this year several students collaborated to build a new acoustics buoy). The second floor has been reopened as a classroom. New composting toilets, a hot water cistern, and shutters were also built for the lightkeeper's house.

2014 also saw the negotiation of a contract with NOAA and Woods Hole Oceanographic Institute to use the station in the 2015 field season (through October) as a sighting platform and acoustic workstation base. The Rock continues to prove itself as a valued training ground for students interested in pursuing a career in marine field research.

This year, I also represented COA at the Gulf of Maine marine field station workshop. This inaugural meeting was to facilitate the creation of a chapter of the Organization of Biological Field Stations specific to the Gulf of Maine, of which the two COA stations, Mount Desert Rock and Great Duck Island would be part.

Finally, I have also continued to give numerous talks locally and regionally about the college and our work in Allied Whale.

The Elizabeth Battles Newlin Chair in Botany

Chair Holder: Suzanne Morse, PhD

Beginning Fund Balance	\$1,066,829
Net Return on Investments	\$62,002
Contributions	—
Less Allocations/Withdrawals	-\$47,085
Ending Fund Balance	\$1,081,746

The fiscal year began with a host of summer activities including the second year of my Sustainable Agriculture Research and Education grant funded project testing the effect of chipped alder on soil quality and vegetable production. This year the focus was on Brussels sprout growth and yield, and was completed in collaboration with Polly McAdam '14 and C.J. Walke, farm manager of Peggy Rockefeller Farms. Later in the fall, C.J. presented our preliminary analysis at the Maine Organic Farmer and Growers Association (MOFGA) farmer-to-farmer conference. In between this research and the management of the community garden, I had the pleasure of traveling to the UK to attend a meeting at Schumacher College and then visited with our transatlantic partners at the Organic Research Centre.

For the fall term, I returned to Norway and taught in the Agroecology graduate program at the Norwegian University of Life Sciences. This course culminated in a well-attended presentation in Oslo in which students shared their work on sustainable food initiatives in southern Norway. During my time in Europe, I attended the Food and Agriculture Organization for the United Nations (FAO) International Symposium on Agroecology for Food Security and Nutrition with four students and presented one paper and co-hosted a workshop on food sovereignty with Mette Vaarst at the International Federation of Organic Agriculture Movements (IFOAM) conference in Istanbul.



In the winter term, I returned to COA and taught an introductory biology course and an intermediate course in agroecology. Although there was snow on the ground, we had the opportunity to study several farms ranging from the largest dairy in Maine to small, integrated Amish farms. I finished the academic year with Theory and Practice of Organic Gardening course and a soil science class with Don Cass. Over these two terms I also supervised four senior projects, two independent studies, and celebrated Earth Day with a discussion on waste.

Throughout this fiscal year I also was a member of the Camden Conference education committee and a member of a task force whose work was to revise the National Food and Agriculture Policy of the Sierra Club. This immense undertaking was highly rewarding and came to fruition in early spring of 2014.

Projects supported by chair funds: The endowment income was primarily used to cover student and faculty attendance to the Northeast Natural History Conference, research expenses for four students in collaboration with Nishanta Rajakaruna, the purchase of a laminar flow hood to be used for mycological research, the purchase of books, and greenhouse maintenance.

Papers presented and published:

Francis, Charles A., Lennart Salomonsson, Geir Lieblein, Tor Arvid Breland, and Suzanne Morse. "Experiential Learning Using the Open-Ended Case." *Agroecology, Ecosystems, and Sustainability* 20 (2014): 347.

Francis, Charles, Anna Marie Nicolaysen, Suzanne Morse, Tor Arvid Breland, and Geir Lieblein. "Bridging farmer experience and science: learning for agroecological design of sustainable farming systems." *Building Organic Bridges* 3 (2014): 899-902.

Morse, Suzanne R., Geir Lieblein, Tor Arvid Breland, Charles Francis, and Anna Marie Nicolaysen. "Cultivating multi-cultural teams: lessons learned in the" milpa" of an Agroecology MSc course." (2014) IFOAM

Morse, Suzanne (2014) Food Sovereignty and Agroecology. Frøkost seminar, NMBU

Nicolaysen, Anna Marie, et al. Evaluation of student reflective documents in agroecology education: a qualitative analysis of experiential learning. *Building Organic Bridges* 3 (2014): 905-908.

The Partridge Chair in Food and Sustainable Agriculture Systems

Chair Holder: Molly D. Anderson, PhD

Beginning Fund Balance	\$3,693,252
Net Return on Investments	\$214,639
Contributions	—
Less Allocations/Withdrawals	-\$163,163
Ending Fund Balance	\$3,744,728

During the past year, I taught four classes (Advanced Food Policy seminar with eight students, Systems Analysis with eight students, Food Power & Justice with ten students, and a Tutorial in Social & Ecological Resilience with eight students). In addition, I supervised five independent studies and saw a master's student, Kristen Dunphey, MPhil '15, through completion of her project on siting urban gardens in Washington, DC. I also advised another COA master's student working on food issues, Abby Plummer, MPhil '15, who planned a summer program at the Peggy Rockefeller Farms for middle-school kids needing academic enrichment, and the senior project of a Colombian student who wrote about Bolivia's agrarian reform.

One of the high points of the year for me was taking the students in my Advanced Food Policy seminar to Rome, Italy to participate in the Committee on World Food Security, with the excellent assistance of an additional student who had done an internship at the Food & Agriculture Organization in Rome in the fall of 2013. The students were able to see food policy being made, and learned how and why different actors believe global food security can be achieved in very different ways. This course was paired with another COA course on Cities: Past, Present & Future and the students toured many of the historic and cultural sites in Rome after the Committee on World Food Security had met. It was wonderful to work with faculty member Isabel Mancinelli to enrich the students' experience!

The other high point was the class on Social and Ecological Resilience, which exemplified the best of COA's approach to education. The students took a major role in helping to coordinate the class and threw themselves into great term research papers on resilience in topics ranging from Native American approaches to climate change to how "resilience thinking" can contribute to waste management.

Over the past year, I gave several talks, including a keynote address on the right to food at a Harvard University conference on food justice and presentations at the Sustainable Agriculture Education Association conference in North Carolina and the New England Sustainable Agriculture Association conference in New York.



During this year, I also supervised an enthusiastic crew of six Sustainable Food Systems Assistants who developed three beautiful newsletters about food and agricultural activities at COA, contributed to improving composting on campus, tracked our food purchases for the Real Food Challenge, and organized an event on sustainable seafood.

I used the past year to deepen professional connections with groups and organizations that invited my participation: the International Panel of Experts on Sustainable Food Systems; Food Solutions New England; the Inter-Institutional Network for Food, Agriculture & Sustainability; Maine Food

Strategy; and the International Advisory Committee of the Sustainable Food Centre at Wilfrid-Laurier University in Canada. I was able to find strong appreciation for my leadership and expertise in these settings.

Beginning Fund Balance	\$1,331,928
Net Return on Investments	\$77,409
Contributions	—
Less Allocations/Withdrawals	-\$58,787
Ending Fund Balance	\$1,350,550



In the fall, I taught an integrated set of courses called the Great West Monster Course with Dr. John Anderson that immersed eight advanced conservation students in the wilderness, ecology, management, and culture of western public lands. Starting in the High Sierra of California, we met with and volunteered alongside public land managers in national forests, wildlife refuges, national parks, and national monuments, through California, Nevada, Utah, and New Mexico.

In addition to service learning in the parks, the class met with advocacy groups, non-profits, and wilderness authors Gary Snyder and Terry Tempest Williams along the way. The course culminated at the 50th Anniversary of the Wilderness Act conference in Albuquerque, NM. From wilderness advocates and wildlife experts, to ranchers and dam operators, the students obtained a human ecological view of this important and spectacular landscape.

I co-taught Marine Policy winter term with its integrated approach to ecosystem science and policy. I also taught an introductory course, History

of the American Conservation Movement, which presented ideas of conservation and preservation in the US over the past 300 years.

In the spring, I refocused my international water class to teach in COA's study abroad program in Vichy, France. This new class, Taking the Waters, looked at water management in France and the EU as well as in a global context. I sponsored two independent studies examining the history of endangered species conservation policy and directed senior projects concerning environmental law and water pollution in Panama and one assessing the wilderness character of the College's Cox Protectorate.

I also continued to work closely with Acadia National Park to coordinate COA faculty and student work in the park. Much of this work has been focused on COA's participation in the 2016 centennial of Acadia and the National Park Service. COA will play a significant role in this effort. In October, I collaborated with Acadia National Park Deputy Chief of Interpretation (and COA graduate) Christie Anastasia and Acadia Deputy Superintendent David Manski to host a roundtable at the Society for Human Ecology Conference entitled, Human Ecology as an Educational Foundation for Protected Area Managers.

T.A. Cox Fund in Management and Protection of Ecosystems

In November, Zinta Rutins '14 and I presented "Parks Across the Curriculum: A Multidisciplinary Approach to Protected Area Education" at the World Parks Congress in Sydney, Australia. Held every ten years, the World Parks Congress is the definitive global forum on protected areas. It not only brings together the most influential people in the world involved in protected area management but it also sets the global agenda for parks for the next decade. This gave me the opportunity to describe COA's curricular collaboration with Acadia National Park to an international audience.

Following the conference, I was invited to join two International Union for Conservation of Nature expert groups on protected areas. I also was invited to visit Australian national parks and to meet with park managers and university personnel about potential student exchanges and graduate opportunities.

In March, I attended two conferences focused on national parks. I coordinated a workshop with Chris Buczko from Acadia at the George Wright Society biannual conference in Oakland, CA entitled, Re-Envisioning the Application of the National Environmental Policy Act (NEPA) Within Land Management Agencies. I also attended the Science for Parks, Parks for Science: The Next Century conference in Berkeley the week prior. I used the T.A. Cox Fund to bring four advanced students with me to the two conferences.

The Sharpe-McNally Chair in Green and Socially Responsible Business

Chair Holder: Jay Friedlander

Beginning Fund Balance	\$2,098,049
Net Return on Investments	\$121,934
Contributions	—
Less Allocations/Withdrawals	-\$92,598
Ending Fund Balance	\$2,127,385

With significant fundraising activity, the introduction of a new sustainable business model, an international course, and significant media exposure, the Sustainable Business Program had a year of growth and expansion. Foremost amongst these achievements was a \$1.5 million grant from the Diana Davis Spencer Foundation endowing and renaming the sustainable enterprise incubator the Diana Davis Spencer Hatchery. The gift will fund administrative support, start-up funds, and equipment.

I introduced a new sustainable business model merging strategy and sustainability called the Abundance Cycle, which has garnered some interest. Presentations on the Abundance Cycle included a keynote in Osaka, Japan at the Asian Conference on Sustainability, Energy and the Environment; the Harvard Project for Asian and International Relations in Tokyo; Forum2100 conference on business and energy in Lausanne, Switzerland; TEDx Dirigo, Case Western Reserve, and Northampton Universities. A book chapter on "Strategic Sustainability—Creating Abundance" was accepted to the forthcoming *Sustainability in Management Education Handbook* published by Edward Elgar. The American Management Association also featured an article on the Abundance Cycle.

This fall, Professor Anna Demeo and I led a group of students and Maine island residents to Samsø, Denmark to learn how that community became carbon negative. Lessons from Samsø were brought back in the form of renewable energy projects on Mount Desert Island and other Maine islands.

Students in the Hatchery are developing a wide range of projects including hydrogen fuel cells, Nepali earthquake relief and schools, an industrial and creative arts community space, a farm, a new fermented natural beverage, an MDI renewable energy consortium, and a theatre company.

I also worked with the Fair Food Network on a business boot camp for food entrepreneurs and taught an entrepreneurship workshop for scientists as part of Jackson Lab's The Whole Scientist™ program.

Students, the Sustainable Business Program, and I were featured in several media outlets, including two front-page business section and several other articles in *The New York Times* and a front-page article in the *Portland Press Herald*. Other media included WERU, Love Maine Radio, *EcoWatch*, and the *Chronicle of Higher Education*.



Beginning Fund Balance	\$1,387,028
Net Return on Investments	\$80,502
Contributions	—
Less Allocations/Withdrawals	-\$65,291
Ending Fund Balance	\$1,402,239

The Lisa Stewart Chair in Literature and Women's Studies supported a wide spectrum of educational and professional experiences this year, including my continuing research in gender, identity, and women's studies. In the fall, I taught my most advanced class, *The Nature of Narrative*, to eleven eager students—most of whom asked to have the course repeated in the spring, despite the fact that each student writes twenty short papers (one per class) and reads twelve novels over the course of ten weeks, in addition to a considerable amount of literary theory.

I also taught Native American Literature, the version that does not involve a trip to the Southwest, so as to make that course accessible to all students. In the winter, I taught Austen, Brontë, Eliot to a group of students who had been requesting it for two years. My second winter course was Nineteenth Century American Women, which gave me the opportunity to talk about women's lives and writing in the nineteenth century on both sides of the English-speaking Atlantic.

Spring term of 2015 was busy, as I had three conferences to attend. The first was the Popular Culture Association in New Orleans, LA where I gave a paper on Laurie R. King's remake of the Sherlock Holmes stories in her Mary Russell series that investigated questions of feminism and gender identity in the narrative project. I delivered a second paper, entitled "Assembling California: Frank Norris' Literary Landscapes in *McTeague* and *The Octopus*," at the Northeast Modern Language Association Annual Conference in Toronto, Canada. Finally, I gave a paper on gender and race in Zora Neale Hurston's *Their Eyes Were Watching God* at the American Literature Association in Boston, MA in late May. I also taught two courses: African American Literature and *Nature of Narrative II*, the latter at the request of several of the fall students. In order to make this feasible, I gave this advanced group of students additional responsibilities in terms of peer review. I was very pleased that they did an excellent job.



The Allan Stone Chair in the Visual Arts

Chair Holder: Catherine L. Clinger, PhD

Beginning Fund Balance	\$1,257,976
Net Return on Investments	\$76,168
Contributions	\$80,553
Less Allocations/Withdrawals	-\$55,315
Ending Fund Balance	\$1,359,382

In the autumn of 2014, I journeyed to Iceland, Norway, London, and Santa Fe, NM as part of my sabbatical. Ute Kühlemann Falck, senior curator of prints and drawings at the *Munch Museet* (Edvard Munch Museum), invited me to the museum and sponsored my residency in Oslo. Together, we have undertaken the examination of a subset of matrices (woodblock, lithographic stone, copper plate, zinc plate) that Edvard Munch crafted to make his prints. We plan to publish our findings.

During this research trip that concentrated on Nordic art and culture, I also attended an interdisciplinary conference that corresponded with the *Gjennom Naturen* exhibition at the museum.

This exhibition focused on how Munch's work interconnected with his interest in Natural History—a perfect subject for a human ecologist art historian. At the same time, Norway's National Museum hosted an exhibition on the subject of my primary research, Caspar David Friedrich. A key object of the exhibition, Friedrich's *Woman Before the Setting Sun*, is the subject of an essay I am writing.

Following this course of research, I developed my findings in order to tutor a group of students from my Wilderness in Landscape Art class during a weekend field trip to the Museum of Fine Arts (MFA) in Boston, MA during the winter term. One of my independent studies and advisees, Maya Critchfield '16, was awarded the Lunder Internship in the Art of the Americas collection at the MFA in Boston. Maya utilized chair funds to purchase art supplies and texts for her study of textile-print manufacturing and design. Graham Hallett '17 undertook a visual culture study with me and received funds to support his travel to research the communities affected by mining in Navajo lands in New Mexico.

During the winter term, I completed the second stage of the chemical-use protocol and equipment installation in the new printmaking studio. This upgrade enabled a group of advanced students to continue their studies in fine art printmaking methods under my tutelage. The purchase of ink, mordants, and fine paper were subsidized with chair funds. One of the advanced students, Lindsay Mercer '15 (now a graduate student at CalArts) received a Maine Space Grant supplemented with chair funds in order to complete her archival research for a project to communicate how art, science, and technology may conspire together and operate within a more expressive sphere of human ecological action.

In the Coffee & Conversation Series, I had the honor of speaking with Clare Stone concerning her vision for the Chair and how her gift has contributed an array of summer arts lectures over the years in addition to funding visiting artist workshops during the academic year. I continue to serve in the arts advisory group for the Schoodic Institute and make summer trips to Great Duck Island to advise our student interns who make art while researching there.



The James Russell Wiggins Chair in Government and Polity
The Philip Geyelin Fund for Government and Polity
Chair Holder: Jamie McKown, PhD

Beginning Fund Balance	\$1,718,903
Net Return on Investments	\$99,899
Contributions	—
Less Allocations/Withdrawals	-\$75,864
Ending Fund Balance	\$1,742,938

The past year has been an exciting and busy time for politics and governance here at COA. It was a congressional election year and that means we offered our popular Fall course, Political Campaign Communication and Messaging. Not only does this course explore the history of political campaigning in the US, it also engages students directly in the tracking of targeted congressional races for that fall cycle.

As in the past, students once again finished off the term by building their own simulated campaigns for the fictional position of COA Grand Presidency. I especially wanted to thank this year's willing guinea pig candidates who offered their time (and photos) for the students: faculty members Jodi Baker and Sean Todd.



This winter, I was fortunate enough to teach an intensive advanced seminar on contemporary Russian politics and its impact on international security. The class was coordinated to coincide with the annual Camden Conference and offered our students a wonderful opportunity to pursue intensive research into the dynamics of salient foreign policy questions. The seminar was a great success and spurred a number of offshoot projects that will continue into the coming year. We are also exploring whether to add this course as a regular supplement to our current Cold War history sequence.

While I had the pleasure of working with a number of outstanding students on their various senior projects this past year, I wanted to particularly highlight two that I think speak to the type of independent work that COA tries to foster. The thorough exploration of the shifting dynamics of Bolivian politics by Adrian Fernandez Jauregui '15, and a planning model for a new online platform by Amber Taputagaloa Igasia '15 that targets New Zealand youth of Pacific Island heritage, provide two excellent examples of how COA students utilize the space of a senior project to synthesize their experiences both inside and outside of the classroom.

I am also pleased to report that our ongoing research projects have continued to move ahead with engaged student participation at various levels. Most notable this past year were efforts to systematically survey and document the beginnings of US intercollegiate debate at the end of the 19th century. This project fills an important gap in the existing contemporary accounts of how debate instruction, as a form of civic education, developed in the United States. Working with several students, we have now built a comprehensive database that documents approximately 900 such debates that took place prior to 1910. Over the past year we have presented our initial findings at the centennial meeting of the National Communication Association in the fall, as well as at the first ever National Endowment for the Humanities (NEH) sponsored conference on Debate and Civic Education at Penn State in the spring. The next stage of this project will involve adding additional qualitative elements to help build a robust accounting to our dataset. We will be presenting this new round of findings at the upcoming 5th quadrennial Tokyo Conference on Argumentation in 2016.

Endowed Scholarships

BROOKE AND VINCENT ASTOR SCHOLARSHIP

The Brooke and Vincent Astor Scholarship Fund was established through a generous gift in Mrs. Astor's will as well as the Vincent Astor Foundation. The endowment is to be used to provide scholarship to Maine students with financial need. Current recipients of the fund include:

Malia Demers '18 (Bar Harbor, ME)

Kennedy Johnson '16 (Saco, ME)

Zak Kendall '17 (New Sharon, ME)

Gregory Bernard '17 (Nobleboro, ME)

SIDNEY AND HAZEL DEMOTT BAHRT SCHOLARSHIP

The Sidney and Hazel DeMott Bahrt Scholarship was created through a planned gift by the Bahrts. We honor the legacy of our long-time friends who were great supporters of environmental, educational and cultural organizations. This scholarship is awarded to Maine students from Pembroke or Washington County, with first preference to an alumna/us from Washington Academy.



Recipient: Lea Bushman '15 (Machias, ME)

This is the last year in Lea's full, four-year scholarship to COA. Lea has been focused on all things plants: farming, gardening, botany, and medicinal plants. The senior is from Machias, Maine. She did her internship with the Downeast Coastal Conservancy. During her time with DCC, Lea helped plan and implement the Pike's Plants project on the Pike Lands easement property in Lubec, and assisted with field work and other projects, including winter outings and outreach activities within the community. She helped develop an internship program model that can be used for college and high school students interested in interning at DCC in the future.

THE CHRISTENSEN SCHOLARSHIP FUND

The Christensen Scholarship fund was created in 2005 by a gift from the Carmen M. Christensen Foundation. The Scholarship is awarded to qualified students seeking financial assistance, with preference for international students. Many COA students receive aid from this fund. Here are some of the recipients:



Omer Shamir '16 (Tel Aviv, Israel)

Omer Shamir is a third-year Davis United World College Scholar from Israel. He attended the United World College in Mahindra, India before coming to COA. His interests are international environmental politics and documentary studies. He has started a Good Film Club at COA which shows films from all over the world. He is currently working on a documentary he filmed in Peru during the 20th United Nations Climate Change conference.



Surya Karki '16 (Madi Mulkharkha, Nepal)

Surya Karki is a third-year Davis United World College Scholar from Nepal. He is the founder of Diyalo Foundation, a non-profit organization building a bridge between social and economic development in Nepalese communities with few resources through collective and collaborative works. He has won awards and accolades from various international organizations including AshokaU Changemakers, and was a finalist in the 2013 Unilever Sustainable Living Young Entrepreneur Awards.



Aneesa Khan '17 (Chennai, India)

Aneesa is a Davis United World College Scholar in her second year at COA. Her focus has been on international environmental politics. She is part of the student group Earth in Brackets, which focuses on climate change politics, advocacy, and activism. Aneesa spent the spring term in France, where she took a COA course entitled French Food, Politics, and European Political Institutions—an immersion experience in language, food, water, and politics. The eight-week course began in Vichy then traveled to Marseilles, Brussels, and Paris during the last two weeks of the term to meet with activists, industry, and key political figures.



Angela Valenzuela '17 (Rancagua, Chile)

Angela's main focus is environmental politics. She has attended several UN Framework Convention on Climate Change meetings throughout the world and has taken courses to prepare for these intense international summits. Angela is a talented musician. She is involved with one of COA's a capella groups and plays music with friends on campus.

REBECCA CLARK MEMORIAL SCHOLARSHIP IN MARINE SCIENCES

This scholarship fund was created in memory of COA alumna Rebecca Clark '96, who lost her life in the December 2004 tsunami while conducting research on sea turtles in Thailand. This scholarship is awarded to a student who embodies Rebecca's dedication, enthusiasm, passion and excellence in marine science and marine conservation.



Recipient: Roshni Mangar '16 (Roche-Brunes, Mauritius)

After an INBRE summer fellowship at Mount Desert Island Biological Laboratory on the toxicological reactions of fish, Roshni focused on marine conservation and management as part of a Sea Semester program in New Zealand. She was also awarded a Maine Sea Grant student fellowship to help with her research on marine mammals and conservation. This summer, Roshni will be in Florida working with the Sarasota Dolphin Project, a collaborative effort of Mote Marine Laboratory and the Chicago Zoological Society. She will be researching the bottlenose dolphin, and examining how researchers set up successful research and conservation organizations, intending to bring lessons learned to inform work in Mauritius.

RICHARD SLATON DAVIS AND NORAH DEAKIN DAVIS SCHOLARSHIP

The Richard Slaton Davis and Norah Deakin Davis Scholarship is a need-based award honoring the memory of Richard Slaton Davis, College of the Atlantic's first faculty member in philosophy.



Recipient: Ursa Beckford '17 (Clifton, Maine)

Ursa was homeschooled by a farm family in nearby Clifton. The second-year student has taken advantage of the democratic structure of the college and is deeply involved in governance issues and social and environmental causes. In his first, he started the COA Council on Foreign Affairs, which now publishes a journal called Outlands. Ursa was selected to go to the White House Fellows weekend in Washington DC in November as a guest of a fellow and his wife as part of a COA pilot program. Finally, Ursa ended his second year at COA as the piper—he is a world class bag piper!—at COA's 2015 Commencement ceremony.

JOHN C. DREIER SCHOLARSHIP

This scholarship award honors John C. Dreier, a former diplomat in the US Department of State and US Ambassador to the Organization of American States, who devoted his retirement in Maine to education and conservation. He joined COA's Board of Trustees in 1973 and served as Chairman of the Board from 1976–1978.

Recipient: Shira Catlin '15 (Northampton, Massachusetts)

Shira creates community wherever she goes. Her passion for bringing people together is inspiring. Whether it's teaching an exercise class at the YMCA to a group of 30, bringing her therapy dogs to hospitals, or helping children learn to read, Shira constantly works to help individuals and communities thrive.



Recipient: Amber Igasia '15 (Wellington, New Zealand)

Amber has worked in the Student Life offices, designing training materials and workshops for new Resident Advisors, and as a member of the Student Life Committee. Her senior project involves a feasibility study and design model for building an online platform to provide support for and build community among young people of Pacific Island heritage in New Zealand. This at-risk community is often marginalized in the mainstream school systems.



LOUISA R. DREIER SCHOLARSHIP

Louisa Cabot Richardson Dreier, known as Isa, was an artist of remarkable talent who set aside her own work to focus on raising her family, but always kept her creativity alive through drawings, illustrated writings, and gardens. Coming back to painting later in life, her beautiful still life paintings and portraits expressed her humor, happy spirit and her joy in making art. The Isa Dreier Scholarship is given annually to a junior who embodies the spirit of joy in the arts.



Recipient: Khristian Mendez '15 (Guatemala City, Guatemala)

Khristian works tirelessly with the community at COA and beyond to lend his skill and experience in graphic design and visual arts. He has taken many art classes and moved seamlessly between the realm of fine and applied arts. He is an individual who does not see himself encamped in an arts discipline, rather, Khristian is more of a creative problem solver. He has done significant internships and projects at COA as public service. After his graduation in June, Khristian will join the COA staff as an Admission counselor.

SAMUEL & MARY KATHRYN ELIOT SCHOLARSHIP

The Eliot scholarship was established in honor of COA's first vice president, who retired in 1982, and his wife, who served as fundraising assistant to COA's first president and designed the college's iconic logo. The Samuel and Mary Kathryn Eliot scholarship provides annual scholarship aid to qualified Maine students.



Recipient: Heather Hayden '15 (Otisfield, Maine)

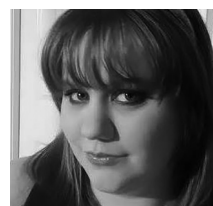
Heather Hayden brings lively energy to a broad range of interests that include physics, genetics, and creative writing. She worked in the Information Technology department throughout her college career, helping to fix issues for staff, faculty, and students. She has deftly blended these interests throughout her education at COA, culminating with her proposed senior project, a novella entitled *Augment* which explores human ecology through Science Fiction.

GENERAL SCHOLARSHIP FUND

The General Scholarship Fund was established in 1984 through the Silver Anniversary Campaign. The fund contains gifts given by hundreds of friends in every amount for unrestricted student scholarship. We continue to take donations for this important endowment. There are many students who receive aid from this fund. Here are some of them:

Alyssa Seemann '17 (Bally, Pennsylvania)

Alyssa focuses on entomology, the study of insects and non-insect terrestrial arthropods. She believes the field of entomology exemplifies the spirit of Human Ecology: humans and insects have interacted with each other since well before recorded history. She will be working at the Smithsonian National Museum of Natural History over the summer in the entomological unit.



Taylor Thomas-Marsh '15 (Everett, Washington)

Taylor Thomas-Marsh is a fourth-year student who has embraced all aspects of the performing arts. She completed a community assessment of the history of the arts on Mount Desert Island and presented it at a public forum in her junior year. She recently co-wrote and produced a play with a fellow student. This spring, Taylor completed an internship with the *Der Vorfuhrereffekt* company in Philadelphia, working on a retelling of the Wizard of Oz. She says, "I've had the wonderful opportunity to work with all kinds of wonderful artists and makers. This is an amazing piece of DIY theatre."



Bret Welch '17 (Port Orange, Florida)

Bret Welch is a second-year student from Florida. His studies center on political science with an emphasis on Russian/Cold War history, language, and politics.



Kristen Wegner '16 (New Port Richey, Florida)

Kristen's studies revolve primarily around literature and creative writing and, at times, have also incorporated journalism and science writing. She has a generalized love for learning and life, and views English as a way to address the many ways in which multiple disciplines intersect and how humans relate to the complexity of life.



CRAIG GREENE MEMORIAL SCHOLARSHIP

Created in memory of faculty member Craig Greene, this award honors Craig's indomitable spirit, excellent teaching ability, and abundant zest for sharing his extraordinary knowledge of the natural landscape with students, friends, and colleagues. The college awards an annual scholarship to a student who has excelled in botany and general biology classes and who shares Craig's passion for plants.



Recipient: Ian Medeiros '16 (Rehoboth, MA)

This is Ian's second year as the Greene Scholar. He is passionate about plants and has an infectious enthusiasm to share his knowledge of plants with others. Since his first year, he has been thoroughly grounded in botany and ecology and equally fascinated with the scientific method. Ian is eminently prepared for advanced topics in the life sciences, especially in plant ecology.

HARTZOG-KAUFFMANN SCHOLARSHIP

This award honors both George B. Hartzog and John M. Kauffmann. Kauffmann, who passed away in 2014, was a former COA trustee and retired to MDI after a long career at the National Park Service, most notably in Alaska where he helped define the boundaries of the Gates of the Arctic National Park. George Hartzog, head of the National Park Service from 1964–1972, was a hero of John's and revered by many for the way he managed the agency and defended the NPS during his tenure.



Recipients: Ariana Rambach '16 (Ashland, Oregon)

Ariana is a third-year student with a passion for wild places and environmental education. Using her knowledge of public lands and Acadia National Park, Ariana has designed new curricula for COA's Summer Field Studies and COA's George B. Dorr Museum of Natural History. Ariana was fully immersed in the ecology, history and policy of western public lands in the Great West Monster course this past fall.



Chris Phillips '15 (Leominster, Massachusetts)

Chris has thoughtfully combined a strong background in ecological sciences with a passion for wilderness and wild places. After a summer conducting deontological research on Great Duck Island, Chris spent the fall exploring ecology and policy of western public lands in the Great West Monster course. He was inspired by that experience to do a senior project focused on wilderness policy, and traveled to Washington, DC to lobby for protection of wilderness in Utah.

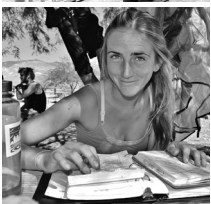
AUGUST HECKSCHER SCHOLARSHIP

August Heckscher was an artist, author, and public servant whose life and work encompassed many of the values and principles underlying the study of human ecology. The August Heckscher Scholarship Fund provides two annual need-based awards for students (one female, one male) focusing on public lands, government, or the arts.



Recipients: Evan James '16 (Meriden, Connecticut)

Evan is extraordinarily accomplished in the arts—drawing, in particular. In addition, he is a superb musician and composer who creates rich and profound works that combine guitar composition, sound design, poetry, and drawing. He has taken a variety of classes while at COA, ranging from Natural History and Ornithology to Native American Literature and Wilderness in Landscape Art. He is working as a Seasonal Field Assistant at the Somes-Meynell Wildlife Sanctuary and hopes to deepen his understanding of and relationship with the ecology of Mount Desert Island.



Meaghan Lyon '16 (Waretown, NJ)

Meaghan's passion for birds and their habitats, whether on Great Duck Island or on wildlife refuges in the American west, inspires her work on public lands. A three-year veteran of Great Duck Island, Meaghan traveled out west with the Great West Monster course identifying birds as she went and exploring the intersection of policy and ecology in this very distinct landscape.

THE BETTERMENT SCHOLARSHIP FUND

The Betterment Foundation Scholarship Fund was established in 1995 and provides support for students from rural Maine. The Betterment Fund was created in 1955 for charitable purposes by the will of the late William Bingham of Bethel, ME.



Recipients: Paige Nygaard '17 (West Bath, Maine)

Paige is on a roll. The second-year student from Bath, Maine traveled to the island of Samso, Denmark in the fall term to explore the finances and mechanisms for converting a community to renewable energies. She came back and launched a conservation project that enabled MDI residents to get home energy audits and sealing for reduced costs. This spring, Paige traveled to France to study food politics in France and the EU.

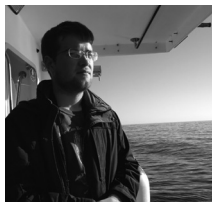


Tyler Hunt '17 (Athens, Maine)

Tyler just completed his second year at COA. A first generation college student, he had not seen the ocean before he came to College of the Atlantic. Tyler is a gifted artist and takes many drawing and painting courses. His exceptional turkey vulture drawing will be exhibited in a gallery show this summer in Northeast Harbor, Maine. Tyler is also interested in natural history—especially ornithology. He is a hardworking and conscientious student.

THE EDWARD G. Kaelber Scholarship for Maine Students of Outstanding Promise

The Edward G. Kaelber Scholarship for Maine Students of Outstanding Promise is awarded to an incoming first-year student from Maine who demonstrates a high level of achievement in academic and community work. Support continues during his/her four years at COA.



Recipient: Wade Lyman '15 (Bar Harbor, ME)

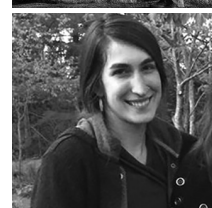
A fourth-year student at COA, Wade is a talented naturalist and has spent much of his career in the field studying herpetology, ornithology, and other environmental sciences. Wade, a Bar Harbor native, took part in a course in alternative energies held on the island of Samsø, Denmark where the class visited the Energy Academy. He also studied in Veneto, Italy, where he explored the artisanal economy which, in some ways, could be a model for Maine's creative economy.

THE KENDUSKEAG SCHOLARSHIP

The Kenduskeag Scholarship was established in 1995 with two \$75,000 gifts from Dead River Company and the Kenduskeag Foundation. This fund now provides approximately \$7,500 in scholarship aid to students from Maine each year.

Recipient: Shlomit Auciello '17 (Rockland, Maine)

Shlomit is an alternative student who is taking COA by storm. At age 62, she went back to college after working for years as a journalist. This is her first year at COA as a transfer student and she is taking every opportunity offered to her. She has spent weekends bird watching on COA's islands, is part of an a capella group, organizes open mic nights, and this summer will be participating in the Semester at Sea program.



Recipient: Malia Demers '18 (Bar Harbor, Maine)

We are so happy to have Malia here! Every member of her family has attended COA. Her father, Steve, graduated in 1980. Rose, her mom, attended in the mid-80s, though she received her degree elsewhere. Her sister Lilly was class of 2013. Prior to attending COA, Malia took a gap year and traveled throughout Ireland and China. She is interested in the arts and community.

THE H. KING AND JEAN CUMMINGS SCHOLARSHIP

The H. King and Jean Cummings Scholarship supports a student from western Maine to attend the College of the Atlantic. From 1995 to 2003, the H. King and Jean Cummings Charitable Trust began making \$10,000 annual gifts, for a total of \$80,000. COA has endowed these gifts which now provide approximately \$4,000 every year for scholarship support to a qualified student.

Recipient: Ivy Enoch '18 (Farmington, Maine)

In her first year at COA, Ivy focused her studies on the psychology of religion. Across the globe there are societies, schools, governance systems, and communities that rely on, and are driven by, religion and spirituality. She studies why this is, and how our spiritual worlds impact and/or intertwine with the natural world.



THE AGNES LINDSAY TRUST FUND

The Agnes Lindsay Trust provides financial aid to qualified students from rural New England towns with 5,000 or fewer residents.



Recipient: Haleigh Paquette '17 (Grantham, New Hampshire)

Haleigh Paquette can be found every Friday in a corner of the COA dining hall, selling bulk oats, cornmeal, wheat flour, honey, and jams. The makeshift organic buying club is just one of her many volunteer projects here at COA. She also helped in the coordination of Earth Day. She is interested in sustainability and is part of the zero waste club.

MAINE SPACE GRANT CONSORTIUM FUND

Maine Space Grant Consortium funds scholarships for incoming students who are interested in studies in the STEM fields.

Recipient: Kimberly Lopez Castellanos '18 (Bronx, New York)

Kim Lopez Castellanos is in her first year here at COA. She is from the Bronx and is interested in geopolitics in developing countries. She recently attended the UN headquarters during the negotiations for the Sustainable Development Goals and has organized a discussion group around these topics.



Recipient: Nicole Novoa '18 (Lawrenceville, Georgia)

In her first year at COA, Nicole expressed her diverse interests by taking a wide variety of courses, from Shakespeare: Character, Conflict and Cinematography, to Biology and Ecology: Natural History.



Recipient: Xochitl Ortiz Ross '18 (London, United Kingdom)

Xochitl Ross is a first-year student from London, UK. Despite being from a major international city, you can often find her in the field: collecting salamanders, finding snakes, and picking up turtles. She is a musician as well and has performed in some of the on-campus musical venues.



Recipient: Gloria Mitchell '18 (Broken Arrow, Oklahoma)

Gloria is in her first year and has taken a number of courses including a tutorial in the cello, Architecture Design Studio, Biology, and Native Americans of the Down East Coast. Next Fall, she will study Landscape Architecture Design, Constitutional Law: Civil Rights and Liberties, and educational studies.



THE PARTRIDGE SCHOLARSHIP

The Partridge Scholarship was established in 2011 with a generous grant from the Partridge Foundation to fund scholarships for rural Maine and New England students who are interested in studying the human ecology of sustainable agriculture. Here are a few of the students receiving this aid:

Linnea Harrold '15 (New London, New Hampshire)

Linnea graduated from COA this June. She focused on a number of interdisciplinary fields including nutrition and health. For her senior program she explored health care around the world. Linnea created a clinic in a building on campus that illustrates her experiences in rural health care here in Maine & in East Africa.



Connor O'Brien '17 (Ipswich, Massachusetts)

Connor's work at COA has been focused on food systems, horticulture, and botany, especially bryophytes. One interesting project he has developed is a bee colony at the Peggy Rockefeller Farms. The pollinators are coming in handy now that PRF has planted an apple orchard.



Blue Sky '16 (Shannock, Rhode Island)

Blue has taken various courses in food systems, including the Farm & Food Project Planning course. She designed a beautiful medicinal garden that incorporated aspects of Native American heritage. In a GIS class, she mapped out where COA sources food—farms, fisheries, dairies—creating a food print informational graphic.



MAURINE AND ROBERT ROTHSCHILD SCHOLARSHIP AWARD

Robert Rothschild was a member of COA's board of trustees from 1985 until 1990. His wife, Maurine, joined the board in 1985 and was a life trustee until her death in 2004. Maurine was a strong advocate of the COA's Educational Studies Program and Teacher Certification Program. The Rothschilds endowed this scholarship fund to assist graduate students and those preparing for careers in education.

Recipient: Abby Plummer, MPhil '15 (Nobleboro, Maine)

Abby focused on education studies. Abby has recently developed a hands-on curriculum at COA's Peggy Rockefeller

Farms. Growing Season is a farm-based summer learning program for rising 5th-8th grade students. Offered as a two-week enrichment program, the Growing Season curriculum is interdisciplinary and is aligned with national and state learning standards. Students will choose from a menu of daily activities based on their own unique interests, such as gardening, farm stand management, animal care, collecting eggs, cooking, and art projects.



Recipient: Sarah Morgan Kearsley, MPhil '16 (Portland, Maine)

Sarah has been studying experiential science education with a focus on making experiential education a meaningful part of the high school science curriculum. She has developed lessons and assessment for a residential environmental leadership program she runs for high school students in Casco Bay. Her thesis involves a mixed-methods study on these students to capture their perspectives on experiential education. While at COA, she is pursuing high school life science teacher certification.



THE MICHAEL AND ROSE RUSSO SCHOLARSHIP

The Michael and Rose Russo Scholarship was made possible with a generous gift from Jennifer and Jay McNally '84. This four-year scholarship provides financial assistance to a high-achieving student who is a great fit with the mission of COA.

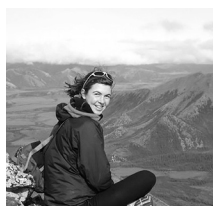


Recipient: Casey Acklin '15 (Bellmore, NY)

Casey's studies at COA have focused on biomedical research. His senior project is on Alzheimer's care. He writes: "I plan to explore two facets of Alzheimer's care. I first will be traveling to Europe to visit humanistic care centers, conducting an ethnographic project, studying the cultural influences on the psychology and care systems surrounding dementia. After I return, I'll work at The Jackson Laboratory in an Alzheimer's research group, exploring the genetic risk factors associated with the disease. By approaching this ever-growing problem from two different sides, I hope to increase my understanding of Alzheimer's disease and gain a sense for what it's like to live with dementia."

DONALD STRAUS SCHOLARSHIP

Don Straus, COA trustee from 1974 to 2007, had a deep passion for human ecology. He chaired the Academic Policy committee, pushing the college toward ever-increasing intellectual rigor. Outside of COA, he was a trustee of the Carnegie Endowment for International Peace, Princeton Institute for Advanced Study, and the Population Resources Council. Don thrived on his involvement with COA students, and taught courses based on his extensive experience as an international mediator.



Recipient: Nimisha Bastedo '15 (Yellowknife, Northwest Territories, Canada)

With a focus on Educational Studies, Nimisha will graduate in June. For her senior project, she worked closely with a school in Fort Providence, a small Indigenous community in Northwest Territories, Canada which employs the On-The-Land School curriculum. Her role is to develop a guide that will help teachers build intentional, multi-disciplinary learning into the school's culture camps.

ALICE BLUM YOAKUM SCHOLARSHIP

The Alice Blum Yoakum Scholarship Fund was established by Mr. Robert H. Blum in honor of his daughter, Alice, to provide support annually to undergraduate students who plan to be actively working for biodiversity and especially for the preservation of underwater species in various parts of the world.



Recipient: Avery Lam '16 (Tsuen Wan, Hong Kong)

Avery has spent much of her last year doing research in the Western Pacific, working in research labs in both Hong Kong and Taiwan. She has focused her research on coral biology, combining field and laboratory research. She has been particularly interested in how increased temperatures will affect coral growth and reproduction, and the impact climate change will have on the symbiotic relationship between corals and their photosynthetic zooxanthellae.

The Beinecke Student Travel and Living Assistance Fund

Supervising Faculty Member: Ken Hill, PhD, Academic Dean

Administering Staff Member: Jill Barlow-Kelley, Director of Internships and Career Services

Beginning Fund Balance	\$85,155
Net Return on Investments	\$4,956
Contributions	—
Less Allocations/Withdrawals	-\$3,500
Ending Fund Balance	\$86,611

College of the Atlantic requires an eleven-week, full-time internship as one of its degree requirements. Internships allow students to apply knowledge and skills gained through coursework to the world of work. The experience helps students develop a clearer understanding of the academic skill set required within a field, test a career field, and make professional contacts through hands-on practical experience. The Office of Internships administers the Beinecke Student Travel and Living Assistance Fund to students who intern outside of the state of Maine but within the United States.

Nada Zidan '15 interned for Safe Horizons Anti-Trafficking Program, Brooklyn, New York under the supervision of Jessica Glynn, COA '06, staff attorney. Nada worked with various victim assistance programs in domestic violence, rape and sexual assault, child abuse and incest and with anti-trafficking cases. This experience confirmed Nada's commitment to social justice and law school.



Nicholas Sawyer '16 worked for Naya Records, a small, independent record label in Somerville, Massachusetts. Nicholas' internship helped him find a focus for his academic and career plans. He intends to continue to utilize and expand his skills in graphic design and promotion, web design, and video editing. He intends to build a multimedia promotion business of his own in the future. Having been raised in a musical family, Nicholas had an understanding of the music industry that other interns might not.

Casey Acklin '15 provided laboratory research assistance in conducting experiments of brain function and visual neuroscience under the direction of Dr. Michael Crognale of the University of Nevada, Reno. Dr. Crognale is a leader in the visual neuroscience field and his research is dedicated to understanding how human vision is processed into images that then can convey meaning. This was Casey's second internship. His first was at The Jackson Laboratory under the direction of Dr. David Harrison researching the effects of diet restriction on mice lifespan.

Davis Yeo '16 completed a joint research project through Virginia Aquarium near Virginia Beach and Allied Whale at College of the Atlantic. The project included designing a database for the aquarium similar to the one used for marine mammal photo-id and tracking at Allied Whale. Davis updated the North Atlantic Humpback Whale catalog and added data from Virginia's tracking system. His work added tremendous value to the current system of tracking and identifying whales along the east coast of the United States.

Corrie Ingall '16 completed her internship with Casa Esperanza Montessori, a public charter school and private preschool, as a theater and mathematics intern in Raleigh, North Carolina. Corrie chose this internship in order to explore the teaching profession as a prospective career path. She assisted with the teaching of mathematics in English and tutored struggling students. She worked with students interested in creating a performance by helping them write a script, and make props and costumes through theater enrichment and class projects. Corrie found that she enjoyed working with elementary age students and would consider teaching in the future.

Sara Ziegelbaum '16 focused on sustainable agriculture while a student at COA. Her internship was with Cooperative 518, a bio-dynamic farm in Rocky Hill, New Jersey. Sara was involved in all aspects of planting, transplanting, weeding, and harvesting on the 10 acre property. Having worked on COA's Beech Hill Farm, Sara wanted to explore new ways of sustainable food production. She wrote in her internship report that the experience was a valuable stepping stone and a resource for her future farming endeavors.

Kathryn W. Davis Global and Civic Engagement Fund for Peace

Supervising Faculty Member: Stephen Ressel, PhD

Beginning Fund Balance	\$2,203,099
Net Return on Investments	\$129,489
Contributions	—
Less Allocations/Withdrawals	-\$42,976
Ending Fund Balance	\$2,289,612

Student	Award	Intended Use
Fall 2014 awards:		
Randy Miles '15	\$1,000	Airfare and housing associated with winter internship in Mexico
Julie Bowser '17	\$1,000	Airfare associated with winter internship in Bolivia
Cara Weber '16	\$1,000	Airfare and room and board associated with winter internship in Jordan
Kayla Gagnon '15	\$1,000	Airfare, room & board, and in-country transportation for winter senior project in Mexico
Omer Shamir '16	\$168	Airfare and/or room & board for attendance at Climate Change Conference, Lima, Peru
Pablo Aguilera Del Castillo '15	\$1,000	Room & board associated with winter senior project in Bolivia
Sergio Cahueque '17	\$500	Airfare associated with attendance at Climate Change Conference, Lima, Peru
Tallulah Orcel '15	\$1,000	Airfare and/or housing costs associated with winter internship in Madagascar
Zinta Rutins '14	\$1,000	Airfare associated with attendance at the IUCN World Parks Congress in Australia
Emma Kimball '17	\$800	Toward program fee associated with winter Yucatan program
Jay Jolly '16	\$800	Toward program fee associated with winter Yucatan program
Seth Wegner '15	\$800	Toward program fee associated with winter Yucatan program

Winter 2015 awards:		
Chris Phillips '15	\$1,000	Airfare and housing for attending Science for Parks, Parks for Science Conference, and George Wright Society Conference
Ellen Iida '16	\$300	Airfare and housing associated with studying Chinese in Kunming, China
Eric Accardi '17	\$835	Airfare associated with Advanced Food Policy/Cities Course trip to Rome Italy, Fall 2014
Lucia Allosio '15	\$440	Interviews, entrance fees, living expenses for Student Project Research, Nelson, NH
Natasha Krell '16	\$1,000	Airfare and ground transportation associated with summer research in Africa
Remi Geohagan '15	\$1,000	Airfare and/or room and board associated with internship in Costa Rica, Winter 2015
Surya Karki '16	\$1,000	Airfare and room and board associated with Hatchery Project, Spring 2015
Tyler Prest '16	\$800	Airfare and in-country expenses associated with internship in Germany, Spring 2015
Emma Burke '17	\$1,000	Toward program fee associated with spring France program
Jenna Farineau '18	\$800	Toward program fee associated with spring France program
Rebecca Haydu '16	\$1,000	Toward airfare associated with spring France program
Sergio Cahueque '17	\$1,000	Toward airfare associated with spring France program
Barbara Meyers 'xx	\$600	Toward program fee associated with spring Newfoundland course
Grace Shears '17	\$700	Toward program fee associated with spring Newfoundland course
Katie Powell '16	\$650	Toward program fee associated with spring Newfoundland course
Kira Marzoli '16	\$750	Toward program fee associated with spring Newfoundland course
Christi Beddige '18	\$700	Toward program fee associated with spring Newfoundland course
Shlomit Auciello '17	\$700	Toward program fee associated with spring Newfoundland course

Spring 2015 awards:		
Megan Comey '17	\$1,000	Toward airfare and transportation for School for Field Studies, Tanzania
Shlomit Auciello '17	\$1,000	Toward airfare and transportation airfare for SEA semester
Graham Hallett '17	\$600	Toward food and lodging for Philippine Movement for Climate Justice Internship
Porcia Manandhar '17	\$1,000	Toward tuition and program fee for Global Health Study in South Africa
Alyssa Seemann '17	\$1,000	Room and board associated with summer internship
Angela Valenzuela '17	\$600	Airfare toward fall residency
Annarose Maddamma '16	\$500	Airfare and housing costs associated with internship
Brett Welch '17	\$1,000	Fee associated with language acquisition program within fall residency
Olivia Bolus '16	\$500	Fee associated with summer veterinary program
Roshni Mangar '16	\$1,000	Room & Board associated with senior project
David Niemann '18	\$800	Course fee associated with Sarah Hall
Alba Rodriguez Padilla '18	\$800	Hall's South American's Earth Systems course
Klever Descarpentrie '16	\$1,000	Fee associated with COA France Program, Spring 2015
Colleen Dyer '17	\$400	Marine Mammal Biology Course Fee
Kimberly Lopez Castellanos '18	\$450	Marine Mammal Biology Course Fee
Kira Wilson '18	\$600	Marine Mammal Biology Course Fee
Laura Montanari '18	\$350	Marine Mammal Biology Course Fee
Megan Comey '17	\$450	Marine Mammal Biology Course Fee
Taylor Mason '18	\$300	Marine Mammal Biology Course Fee
Teagan White '18	\$600	Marine Mammal Biology Course Fee
Xochitl Ortiz Ross '18	\$600	Marine Mammal Biology Course Fee

The Shelby Cullom Davis Faculty International Studies Fund

Faculty Supervisor: Gray Cox, PhD

Beginning Fund Balance	\$367,822
Net Return on Investments	\$21,385
Contributions	—
Less Allocations/Withdrawals	-\$16,000
Ending Fund Balance	\$373,207

Colin Capers '95, MPhil '09, lecturer in writing, composition and film studies, used \$1,200 to continue study of the French language in Paris for three weeks over the winter break. Additionally, his studies provided him the opportunity to experience and assess language instruction there, network and do course planning and development for extending a Paris component in future COA programs abroad in France.

Bonnie Tai, professor in education, used \$2,379.06 to support a sabbatical trip to Taiwan in which she strengthened her language skills, did research and did course development for a future COA program abroad in Taiwan.

Molly Anderson, professor in food systems, used \$2,423.27 to support research and teaching associated with the 2014 Rome session of the Committee on World Food Security.

Todd Little-Siebold, professor in history and Latin American studies used \$2,500 to support a sabbatical trip to Spain for research and course development.

Steve Ressel and Sean Todd, both professors in biology, used \$1,145.79 each to support travel to the Prescott College site at Kino, Mexico, as guest lecturers and to do curriculum development for teaching a COA program in herpetology there. As members of the Ecoleague, COA and Prescott are well poised to collaborate on such a program at that site.

Doreen Stabinsky used \$1,690 to support participation in the 2014 Rome session of the Committee on World Food Security to develop a course in food diplomacy and research links between agriculture, agroecology, food security, and climate change within the UN Food and Agriculture Organization (FAO). Doreen Stabinsky also used \$924.24 to support travel to Lima for research and for support of students taking part in the Climate Conference there in the fall of 2014.

Karla Peña, lecturer in Spanish and director of the COA Winter Term Immersion Program in Mexico, used \$624.24 for travel to present a session on COA's innovative Spanish program at the annual conference of the Foreign Language of Maine Association.

Ken Cline, professor in law, and Doreen Stabinsky each used \$1,325 to support their language study as part of the 2015 COA program in France.



The Shelby Cullom Davis Student International Studies Fund

Faculty Supervisor: Gray Cox, PhD

Beginning Fund Balance	\$419,165
Net Return on Investments	\$24,374
Contributions	—
Less Allocations/Withdrawals	-\$18,000
Ending Fund Balance	\$425,539

Davis funds supported an especially rich variety of student learning experiences in 16 countries, including 12 internships, 2 residencies, 4 senior projects and 5 independent projects.

Internships:

Julie Bowser '17	Bolivia	ZTE Mining Company in Potosí
Klever Descarpontriez '16	Mozambique	Justicia Ambiental (JA)
Remi Geohegan '15	Costa Rica	Tirimina Biological Reserve
Tristan Herbold '15	Mexico	El Museo de Arte Popular
Seth Wegner '15	Mexico	Teaching English
Alyssa Coleman '18	Peru	Fauna Forever
Cara Weber '16	Jordan	Center for Agricultural Research
Annarose Maddamma '16	Italy	Commune di Santorso
Porcia Manandhar '17	South Africa	Organization of Tropical Studies
Clara Mareschal '17	Belgium	Catholic University of Louvain
Lea Savarnese '17	Denmark	WWoofi g
Tallulah Orzel '15	Madagascar	The Ants of Madagascar

Residencies:

Christina Tellez '16	Bolivia	Family and politics in Bolivia
Angela Valenzuela '17	France	Arts & music for sustainability

Senior Projects:

Pablo Aguilera Del Castillo '15	Bolivia	Land and Identity
Adrian Fernandez Jauregui '15	Bolivia	Political process in Bolivia
Kayla Gagnon '15	Mexico	Un Testimonio de Mujer
Julian Velez '15	Bolivia	"Buen Vivir" and Autonomy

Independent Work:

Ian Medeiros '16	Canada	Botany 2015 Conference, discovery of Hawaiian lichens
Rory Curtin '17	Nicaragua	Indigenous Medical Practicum
Surya Karki '16	Nepal	Building a school & solar station
Natasha Krell '16	Kenya	A study of Vertisols
Alba Rodriguez Padilla '18	Peru	Volcanic Risk Perception

The Faculty/Staff Enrichment Fund

Faculty Supervisor: Sean Todd, PhD

Beginning Fund Balance	\$247,710
Net Return on Investments	\$14,396
Contributions	—
Less Allocations/Withdrawals	-\$10,933
Ending Fund Balance	\$251,173

A number of faculty achieved excellent milestones with use of the Faculty Professional Development (FPD) funds. Some of this was achieved through cost-sharing with other sources (e.g., Davis Faculty International Travel Fund, chair funds, etc). The following faculty used FPD funds in FY2014–15:

In September 2014, Jodi Baker, faculty member in performing arts, received funds to support her attendance at Schoodic Institute's Symposium on Science and Art. Jodi attended many useful talks, and in general the event helped her orient to the types of dramatic arts work occurring locally.

Nancy Andrews, faculty member in performance art, spent most of the winter break finishing her first feature film, "The Strange Eyes of Dr. Myes". Funds were used to travel to Los Angeles to do color correction with alumnus Rohan Chitrakar '04, and then to The Wexner Center for the Arts in Columbus, Ohio where she finished the surround sound audio mix during a one-week residency. The movie has since premiered in both the US and Europe to critical acclaim.

Dr. Heath Cabot, faculty member in anthropology, received funds to attend the American Anthropological Association Annual Meetings in Washington, D.C. She presented on a roundtable discussion on the resurgence of the Mediterranean as a region of interest in field of anthropology. She chaired and contributed to a session on the politics of truth in asylum claims; and she co-organized a panel on "Expertise and the Ethnography of Not Knowing," in which she was also a presenter.

She also had organizational and leadership roles at the conference. As a co-program coordinator for the Association for Political and Legal Anthropology, she vetted and scheduled over 50 panels at the conference. Her role as the incoming co-editor of the Political and Legal Anthropology Review was also announced. Finally, she also spoke at a mentoring workshop for graduate students, entitled "How to get a job in anthropology." Two students, Pablo Aguilera del Castillo '15 and Annarose Maddamma '16 accompanied her to the meetings and presented in the Undergraduate Poster Session. Pablo's paper was one among three papers, out of over 20, that were recognized as outstanding undergraduate posters.

In winter 2015, Dr. Bonnie Tai, faculty member in human studies and education, used funds from the Faculty Development Fund and the Davis Faculty Travel Fund to support travel, study, and research in Taiwan. During her sabbatical, she spent 20–30 hours per week in formal Chinese language studies to improve proficiency in Chinese, particularly in reading and writing of traditional Chinese characters. To support a program proposal she is

developing, she spoke with students, administrative staff and faculty at Tzu Chi University in Hualien and faculty at National Taitung University,

In January 2015, Dr. Davis Taylor, faculty member in economics, attended the American Economic Association annual meetings in Boston, MA. The trip included attendance by three COA students, and they met daily during the meetings to discuss what they had seen and what they planned to see in the future. The trip also allowed him to maintain important personal connections within the economics profession, particularly with colleagues from the University of Oregon, and the U.S. Census Bureau.

In March 2015 Drs. Sean Todd and Steve Ressel, faculty members in biology, received joint funding from the FPD fund, Davis Faculty International Travel fund, and the Katona Discretionary fund to travel to Prescott College's Center for Cultural and Ecological Studies in Kino, Mexico. The purpose of this trip was to network with other Prescott biology faculty and research the possibility of a joint ecoleague field course between COA and Prescott College that would focus on the Gulf of California and its surrounding deserts.

In April 2015 Dr. Nishi Rajakaruna '92, faculty member in biology, attended the Northeast Natural History Conference in Springfield, Massachusetts. He was accompanied by three research students, Ian Medeiros '16, Paul Excoffier '14, and Natasha Krell '16. The students presented the research they have conducted with Dr. Rajakaruna at the conference.

Dr. Rajakaruna also moderated the session in botany/plant ecology and gave a presentation on his research on plants of serpentine outcrops in eastern North America.

In May 2015 Dr. Todd Little-Siebold, faculty member in history, received funds to attend the Latin American Studies (LASA) conference in San Juan, Puerto Rico. Thanks to COA support, Dr. Little-Siebold has been able to attend the LASA meetings sequentially for several years (they occur every 18 months). It represents the best opportunity for him to stay current in his field, nurture old collegial contacts, and meet new scholars. In addition on this occasion he met with the Steering Committee of the Guatemalan Scholars Network. At that meeting they planned the conference that he then organized this summer for 150 academics from around the world in Guatemala. It was an excellent opportunity to reconnect with key colleagues and discuss his research.

The Elizabeth A. and Henry B. Guthrie Chemistry Enhancement Fund

Faculty Supervisor: Donald Cass, PhD, Professor of Chemistry

Beginning Fund Balance	\$54,145
Net Return on Investments	\$3,152
Contributions	—
Less Allocations/Withdrawals	-\$2,200
Ending Fund Balance	\$55,097

The 2014–15 income from the Guthrie fund was used to purchase equipment to introduce more of the engineering aspects of soils into our spring Soils class. In the past, most of the class was focused on issues of global change and sustainable agriculture. After the particularly harsh previous winter and the concurrent rebuilding of some local roads, we decided to include some discussion of the roles of soils in engineering and construction.

To this end, we purchased three pieces of equipment and designed lab experiences around them:

1. Atterberg mechanism: used to determine the moisture content at which a given soil becomes fluid
2. Proctor compaction apparatus: used to determine the optimal moisture content at which a given soil type will become most dense
3. Hydraulic conductivity apparatus: used to measure the rate at which water flows through different soils.

We are grateful for this endowment which continues to provide us with key pieces of equipment, professional development opportunities, or course enhancement each year.

The Barbarina M. and Aaron J. Heyerdahl Beech Hill Farm Endowment Fund

Beech Hill Farm Manager: Tess Faller, Written by Corinne Boet-Whitaker

Beginning Fund Balance	\$84,105
Net Return on Investments	\$4,888
Contributions	—
Less Allocations/Withdrawals	-\$3,712
Ending Fund Balance	\$85,281

Beech Hill Farm continues to thrive under the management of Tess Faller and Anna Davis. The Heyerdahl endowment generates budget relief for Beech Hill Farm every year. The funds have been used for capital projects such as fence repair or irrigation system extensions, or the purchase of our six baby pigs each spring! While the vast majority of the produce produced at Beech Hill Farm is sold to the College of the Atlantic kitchen, we do operate a successful public farm stand each summer from mid-June to mid-October and also operate a Community Supported Agriculture program in the Summer and Fall. For example, members of our Summer CSA receive a box of fresh, seasonal produce every week for 10 weeks, from June 24 to August 26. Weekly pick-ups are on Wednesday afternoons or Thursdays at Beech Hill Farm. Our Fall CSA runs from September 2 to November 4 and shares can be picked up at either the farm or Gates Auditorium on the COA campus. Our Full Season CSA spans summer and fall and runs for the combined 20 weeks. Many people ask why we do not sell at Farmer's Markets. The Heyerdahl Fund is one reason: Our farms are supported by philanthropy. Our farmland was given to us. We do not want to compete with local farmers who have higher expenses—that would not be fair. We strive to be good neighbors. In order to give back to the community, COA has a Share the Harvest program which gives clients of local food pantries free \$50 vouchers to Beech Hill Farm. Over 75 families received these vouchers for fresh, organic produce. We also have a Double Your Dollars program, where people on SNAP get \$2 worth of produce for \$1 worth of SNAP vouchers.

Classes at the farm include a pig butchering and slaughter workshop, apple tree pruning, and many of COA's soil, farming and food system courses. A summer course for high school students called Farm to Fork took place in part on Beech Hill Farm as well as a class for Camp Beech Cliff campers. Farm dinners, music events, May Fest, art exhibits and other community events are held at BHF regularly as a way to create community. Max Godfrey came to visit to teach us southern work songs. He draws upon the songs that African Americans sang for decades in farm fields throughout the 20th century South. As an apprentice on small farms he explored the ways in which traditional songs can be used as tools for strengthening the fabric of local communities. For this year we are looking at the feasibility of installing a small slaughtering facility and a commercial kitchen. These are big projects that will take some planning, but we're excited about the value added foods we could create with this new infrastructure. Stay tuned!

The Robert P. and Arlene Kogod Visiting Artist Fund

Faculty Supervisor: Ken Hill, PhD, Academic Dean

Beginning Fund Balance	\$1,385,962
Net Return on Investments	\$80,549
Contributions	—
Less Allocations/Withdrawals	-\$61,170
Ending Fund Balance	\$1,405,341

Courses offered by visiting instructors

Principles of Comedic Improvisation X2
Principles of Comedic Improvisation X2
Kayak Building
Dramatic Writing for Stage and Screen
History of Filmmaking (1985–1945)
History of Filmmaking (1946–present)
History of Photography
Analog Photography: B&W
World Percussion
Chinese Calligraphy
Voice
Voice

Instructor

Larrance Fingerhut
Jennifer Shepard
Alan DeCheubel
Andrea Lepcio '79
Colin Capers '95, MPhil '09
Colin Capers '95, MPhil '09
Josh Winer '91
Josh Winer '91
Mike Bennett
Philip Heckscher
Joseph Cough '13
Jamie Hagedorn

Teaching assistants for:

Ceramics (2)
Life Drawing (8 models)
Theatre
Movement
Soundscape
Painting
Piano
Video
Installation Art

Field trips, workshops, and class visitors:

Carl Steintz (design)
Louisa McCall (design)
Danielle Leventhal (visiting artist)
Manfred Kischheimer (visiting artist)
Ariana Reines (visiting performer)
Production support for plays
Boston field trips for multiple art courses
(visiting art museums & seeing plays)
Class video screening (3)
Ann Arbor Film Festival (partial funding with student life)

Equipment purchases:

Kiln replacement
Digital Video cameras (2)
Specialized light fixtures
Print shop start up supplies
Sound upgrade for Gates

Conference/Sabbatical and Search support for arts faculty

Fund for Maine Islands

Staff supervisor: Lynn Boulger, Dean of Institutional Advancement

Beginning Fund Balance	\$516,322	
Net Return on Investments	—	
Contributions	\$497,742	
Less Allocations/Withdrawals	—	
Ending Fund Balance	\$1,014,064	<i>The Fund for Maine Islands (FMI), a collaboration between the Island Institute (II), College of the Atlantic (COA) was formed in October, 2013, through the vision and generous support of the Partridge Foundation.</i>

The stated goals of the FMI collaboration are to create:

- A. Stronger institutions with more innovative academic and community programs
- B. More sustainable island communities
- C. Replicable models for a broader audience, and
- D. A new generation of philanthropists

The first major project of the Fund for Maine Islands was the Collaborative for Island Energy Research and Action (CIERA), which brought together COA faculty Anna Demeo and Jay Friedlander, Island Institute Community Energy Team staff Suzanne MacDonald and Brooks Winner, fifteen COA students, and five year-round islanders for an intensive energy leadership program designed to build local capacity for transforming Maine's energy future.

All participants attended the Samsø Energy Academy in Denmark to learn first-hand how local residents had implemented energy production and efficiency strategies to become a net carbon-negative island. After returning to Maine, students and islanders worked together to develop project ideas and feasibility studies to increase energy sustainability on Maine islands, attended a weekly speaker series hosted by COA, shared their ideas more broadly in Maine island communities, and presented at the Institute's annual Island Energy Conference on November 7 in Portland. Some students are now involved in MDI-focused initiatives inspired by CIERA. The island community participants are continuing on their path, working with Island Institute staff to implement community energy projects on their home islands. These projects range from leading a community-wide energy efficiency outreach campaign and group purchasing effort on Peaks Island to developing a comprehensive energy plan for Monhegan Island.

FMI also supported additional collaborative efforts last year. An Island Fellow on Great Cranberry Island was placed in September 2014 by the Island Institute to work with the Great Cranberry Historical Society, and is co-hosted and advised by a COA faculty member, Todd Little-Siebold. The fellow, Jessie Duma, is working with the community on projects related to the History of Agriculture on the Cranberry Isles. In addition to creating connections between the Great Cranberry Historical Society and the Ashley Bryan School around this topic, the fellow is creating connections between the island of Great Cranberry and College of the Atlantic. Island Institute Community development staff visited College of the Atlantic and presented the Island Fellows program to COA students, in an effort to interest other potential applicants to the program.

FMI provided scholarship support to two island students to attend COA, Brittany Cooper '16 and Rory Curtin '17. Both young women have focused on food and agricultural studies.

Public Relations Efforts of FMI Partnership have met with huge success. Media from the partnership has been included in outlets such as EcoWatch, the *New York Times* (on three separate occasions with more planned), *FreePress*, *Bangor Daily News*, *Portland Press Herald*, Watertown (Massachusetts) Tab and Press, GreenEnergyMaine, on the WERU radio show *Talk of the Town*, and many others. David Camlin '08 has shot a series of videos that we have used in social media outreach as well as on donor visits. These have been distributed widely.

The launch party, with keynote speaker Bill Moyers, was covered in regional news media, local news blogs, twitter feeds (including Mr. Moyers' nearly 100,000 followers), Facebook, Working Waterfront, COA Magazine, and other owned media outlets.

The Samsø trip and CIERA project have been reported in COA and II publications and social media, as well as by the *Bangor Daily News* and *Portland Press Herald*. In addition, two others have appeared on Andrew Revkin's *New York Times* blog, Dot.Earth. The *New York Times* reporter Diane Cardwell was invited to join the group in Samsø to gather ideas to bring home. Ms. Cardwell studied Samsø's story along with the FMI group, then spent time with island residents in Maine to determine the extent of the impact of their exposure and understanding of Samsø's project. Her first story appeared in the *New York Times* on Sunday, January 18, and will be followed by two additional reports on this collaboration.

The McCormick Library Director Fund

Staff supervisor: Jane Hultberg, MLS, Director of the Thorndike Library

Beginning Fund Balance	\$579,893
Net Return on Investments	\$33,702
Contributions	—
Less Allocations/Withdrawals	-\$25,594
Ending Fund Balance	\$588,001



The Thorndike Library encompasses the college's information resources, archives, and audio-visual services. Our goal is to ensure we have quality collections and service. To that end, we spent the year on a number of major projects.

During FY15, library staff spent the entire year on a weeding project with the goal of ensuring our book collection is in good condition, relevant, and useful to COA community needs. The project began in FY14 and is anticipated to conclude in Fall FY16. Over 3,000 books were removed from the collection this past year. (This compares to 1,300 in FY14 and 1,000 total between FY09–FY13.) These books, as well as donated books we decide not to keep, are sold on Better World Books, Amazon, or in a book sale. This year we made over \$2,800 in book sales. Items that cannot be sold are

donated or recycled. We are also working directly with a growing number of faculty and staff to acquire books for the collection that are relevant to their needs, and those of the students with whom they interface.

This year we began a reconciliation project, the first in over ten years. The aim of the project is to ensure books and media on our shelves have matching records in our online catalog and vice versa. This involves scanning the barcodes of each library item, matching them against our online records, and reconciling any differences. This project is more than halfway completed and is expected to be finished in FY16.

We increased our interlibrary loan (ILL) Maine van deliveries from two to three days per week. This has increased the speed at which students can obtain materials from Maine libraries. Our numbers show a slight increase in ILL borrowing activity.

A number of collections were added to the College of the Atlantic Archives. Negotiations took place this year between the William Drury family and COA that will result in the papers and relevant archival materials in the Drury Collection being transferred from their current location in Witchcliff to the COA Archives. This will ensure their long-term preservation and accessibility. Pictures and documents donated by the grandson of the original owners of the now Peggy Rockefeller Farms were added to the Archives. Additionally, upgrades were made to the senior project records, which now include physical descriptions (number of pages, document size, etc) for each senior project.

Audio-visual upgrades were made in a number of campus facilities. A new high-definition digital projector was installed in the Thomas S. Gates, Jr. Community Center. This completes the Gates Center audio-visual upgrades which were started several years ago. Also, an Island Institute grant paid for the installation of COA's first video conferencing system in the library seminar room.

Here is a statistical snapshot of our year.

1. 1,397 books were added to the collections
2. 543 of our items were loaned to other libraries via interlibrary loan
3. 1,088 items were borrowed from other libraries for our patrons via interlibrary
4. 17,560 check-outs occurred through our library's circulation desk

The Rabineau Student Senior Project and Professional Development Fund

Faculty Supervisor: Ken Hill, PhD, Academic Dean

Staff Supervisor: Marie Stivers, Director of Academic Services

Beginning Fund Balance	\$65,512
Net Return on Investments	\$3,810
Contributions	—
Less Allocations/Withdrawals	-\$2,800
Ending Fund Balance	\$66,522

Student	Professional development
Pablo Aguilera Del Castillo '15	Present at the American Anthropology Association, Washington, DC
Lisa Bjerke '13, MPhil '16	Youth Zero Waste Convergence in Berkley, CA
Natasha Krell '16	Travel to present at the Santa Rita Experimental Range in Sahuarita, AZ. The symposiums are Research in Semiarid Environments and Phenology Research and Observations of Southwest Ecosystems
Annarose Maddamma '16	Travel to Washington, DC to attend the American Anthropological Association Conference
Nicole Moss '15	Transportation to attend the Social Enterprise Ecosystem and Economic Development Conference in Providence, RI
Emily Peterson '15	Quality Counts Conference registration fee. Information on aging and death
Chitra Shanmuga '16	Travel the 3rd Annual Waste Week in California
Erickson Smith '15	Attend two conferences in California: The Science for Parks, Parks for Science; The George Wright Society's conference "Engagement, Education, and Expectations—The Future of Parks and Protected Areas"
Sara Velandar '17	Forum attendance at the National Adaptation Forum for NGOs on planning action in the face of a changing climate

The Peggy Rockefeller Farms Endowment

Staff Supervisor: C.J. Walke, farm manager

Beginning Fund Balance	\$1,078,623
Net Return on Investments	\$62,677
Contributions	—
Less Allocations/Withdrawals	-\$48,000
Ending Fund Balance	\$1,093,300

In fiscal year 2015, the funds from the Peggy Rockefeller Farms Endowment continued to support the farm manager position held by C.J. Walke, as well as the maintenance of the farmhouse and facilities.

The farms' operations have grown to include 6 Belted Galloway cattle, 30 sheep, 100 egg-laying hens, 300 meat chickens (broilers), 100 turkeys, a half-acre vegetable plot, over 50 apple trees, 50 acres of pasture/hay land, and a compost production system utilizing food debris from the Blair Dining Hall.

During the academic year, C.J. designed and taught the Introduction to Farm Animal Management course during winter term, supervised independent studies in organic orcharding, beekeeping, and fiber arts, and led a crew of work-study students on the farm. Numerous students and faculty have used PRFs for related course work, including wildlife ecology, chemistry, and geology, among others.

Community interactions have also increased with numerous school groups and organizations engaging in educational farm tours to learn more about Peggy Rockefeller Farms and COA.

The Doug Rose Geographic Information Systems (GIS) Enhancement Fund

Staff Supervisor: Isabel Mancinelli, MLA

Beginning Fund Balance	\$41,594
Net Return on Investments	\$2,418
Contributions	—
Less Allocations/Withdrawals	-\$1,800
Ending Fund Balance	\$42,212

This year the Doug Rose funds supported thesis work by graduate student Kristen Dunphey, MPhil '15 on food systems. In order to recommend specific strategies for improving access to healthy food specifically in the Washington, DC area, Kristen needed to come up with a method of locating potential sites that could serve the targeted populations. This required complex computations of multiple types of economic and geographic information.

Doug Rose funds allowed Kristen to travel to ESRI Headquarters in Redlands, California to attend the GeoDesign Summit and participate in a training workshop on how to use new software (GeoPlanner for ArcGIS). This software offered the best option for combining key information to determine potential locations within "food deserts" that were easily accessible to low income neighborhoods either by inexpensive forms of public transportation or by walking, although it had never been used for such an application previously. She worked extensively with ESRI software developers to work out various bugs and limitations of the program as it applied to her unique pilot project. Although the computer program still has some shortcomings highlighted by Kristen's work, this important first step may have significant worldwide implications in addressing urban food insecurity. In her thesis Kristen clearly explained her methodology, making it easy for others to pick up where she left off.

Maurine and Robert Rothschild Student-Faculty Collaborative Research Fund

Faculty Supervisor: Ken Hill, Ph.D, Academic Dean

Staff Co-Supervisor: Marie Stivers, Director of Academic Services

Beginning Fund Balance	\$259,520
Net Return on Investments	\$15,083
Contributions	—
Less Allocations/Withdrawals	-\$11,454
Ending Fund Balance	\$263,149

Faculty: Ken Cline

Students: Ericson Smith '15, Chris Phillips '15, Maya Rappaport '15, and Miguel Provencio '17

For: Attending the Next Century Conference; Attendance and roundtable discussion on parks and the COA curriculum at parks conferences.

Award: \$400

Faculty: Nishanta Rajakaruna

Students: Natasha Krell '16 and Hilary Dawson '18

For: Collaborative Research on plant ecology and climate change related projects on Deer Isle, Maine (leaf drop, yarrow, St. John's wort and white birches) also greenhouse experiment.

Award: \$770

The Elizabeth Thorndike Senior Class Book Fund

Staff supervisor: Jane Hultberg, MLS, Director of Thorndike Library

In 2001, Thorndike family members started a fund in honor of Betty Thorndike, for whom Thorndike library is named. Each year this fund pays for "Senior Books" selected by the graduating class for inclusion in the library's collection. The books selected by the class of 2015 include:

The Pine Island Paradox by Kathleen Moore (2004)

In essays full of rich surface detail, Kathleen Dean Moore weaves arguments about the hidden connections that bind the world, articulating in the process an environmental ethic of caring.

Milkweed Edition Publishers

Being Mortal: Medicine and What Matters in the End by Atul Gawande (2014)

Medicine has triumphed in modern times, transforming the dangers of childbirth, injury, and disease from harrowing to manageable. But when it comes to the inescapable realities of aging and death, what medicine can do often runs counter to what it should.

From the author's website

Citizen: An American Lyric by Claudia Rankine (2014)

Marrying prose, poetry, and the visual image, *Citizen* investigates the ways in which racism pervades daily American social and cultural life, rendering certain of its citizens politically invisible.

National Book Award Judges' Citation

Women in Clothes by Sheil Heti, Heidi Julavits and Leanna Shapton (2014)

Women in Clothes ... is essentially a conversation among hundreds of women of all nationalities ... on the subject of clothing, and how the garments we put on every day define and shape our lives.

Penguin Publishers

Radioactive: Marie & Pierre Curie: A Tale of Love and Fallout by Lauren Redniss (2010)

Described simply, "Radioactive" is an illustrated biography of Marie Curie, the Polish-born French physicist famous for her work on radioactivity and her equally accomplished husband, Pierre.

New York Times Book Review

*Thug Kitchen—The Official Cookbook: Eat Like You Give a F*ck* by Thug Kitchen (2014)

Thug Kitchen started their wildly popular web site to inspire people to eat some Goddamn vegetables and adopt a healthier lifestyle. ...Thug Kitchen wants to show everyone how to take charge of their plates and cook up some real f*cking food.

Rodale Publishers

Beginning Fund Balance	\$8,368
Net Return on Investments	\$496
Contributions	—
Less Allocations/Withdrawals	—
Ending Fund Balance	\$8,864

Women, Food, and God: An Unexpected Path to Almost Everything by Geneen Roth (2010)

Geneen Roth has written an extraordinary book ... she gives us a practical way to use our bodies—along with some of the most difficult parts of our emotional lives—as gracious and transformative portals to our soul.

Rick Foster

All the Light We Cannot See: A Novel by Anthony Doerr (2014)

I must blame Anthony Doerr for lost sleep, because once I started reading his new novel, "All the Light We Cannot See," there was no putting it down. Told mostly in the present tense, in short and usually pointed chapters, the story moves briskly and efficiently toward its climactic encounter during the Allied bombing of Saint-Malo, France, a couple of months after D-Day.

New York Times Book Review

Days of War, Nights of Love: Crimethink for Beginners by CrimethInc Workers' Collective, Nadia C. et al (2002)

A collection of political, social and philosophical essays written and published by anarchist collective CrimethInc.

Wikipedia

Why We Love Dogs, Eat Pigs, and Wear Cows: An Introduction to Carnism by Melanie Joy (2011)

In her groundbreaking book, *Why We Love Dogs, Eat Pigs, and Wear Cows*, Melanie Joy explores the invisible system that shapes our perception of the meat we eat, so that we love some animals and eat others without knowing why.

Beyond Carnism

Keeping the Wild: Against the Domestication of the Earth by George Wuerthner (2014)

In *Keeping the Wild*, a group of prominent scientists, writers, and conservation activists responds to the Anthropocene-boosters who claim that wild nature is no more.

Island Press

Against Equality: Queer Revolution, Not Mere Inclusion by Ryan Conrad (2014)

The Against Equality Collective asks some hard questions. These queer thinkers, writers, and artists are committed to undermining a stunted conception of "equality." ... Against Equality seeks to reinvigorate the queer political imagination with fantastic possibility!

AK Press

COA's Physical Plant Funds

Ethel H. Blum Gallery

The Ethel H. Blum Gallery was dedicated in 1993 to Ethel H. Blum (1900–1991), an accomplished watercolorist who studied at the Art Students League and the Brooklyn Museum Art School, and exhibited widely in her lifetime. A longtime summer resident of MDI, she took special pleasure in painting Maine coast views.

Beginning Fund Balance	\$260,338
Net Return on Investments	\$15,130
Contributions	—
Less Allocations/Withdrawals	-\$11,490
Ending Fund Balance	\$263,978

Brewer-Gower-Sawyer-Garber Fund

Created by founding Trustees Les Brewer and Father James Gower and local businessmen Charles Sawyer and Michael J. Garber, to support campus grounds improvements.

Beginning Fund Balance	\$499,337
Net Return on Investments	\$29,020
Contributions	—
Less Allocations/Withdrawals	-\$22,038
Ending Fund Balance	\$506,319

Kathryn W. Davis Center Building & Grounds Fund

Created by gifts from the Shelby Cullom Davis Foundation in support of the maintenance and upkeep of the Davis Center and grounds. The Kathryn W. Davis Center for International & Regional Studies currently holds faculty and staff offices and is used for classes and a meeting area for the campus's international population. The Davis Carriage House is a rustic addition to the available student housing. The Kathryn W. Davis Residence Village is the newest and "greenest" housing complex.

Beginning Fund Balance	\$272,225
Net Return on Investments	\$15,821
Contributions	—
Less Allocations/Withdrawals	-\$12,015
Ending Fund Balance	\$276,031

Thomas S. Gates, Jr. Community Center

Gates is regularly used for lectures, theatrical productions, music and dance performances, and large meetings or workshops. The hall has a stage with optional podium, seating on the main floor and balcony, a lighting and sound booth, and digital projector with screen.

Beginning Fund Balance	\$64,132
Net Return on Investments	\$3,717
Contributions	—
Less Allocations/Withdrawals	-\$3,199
Ending Fund Balance	\$64,651

Thorndike Library/Kaelber Hall

Kaelber Hall is the large natural-shingled building located in the center of campus. Kaelber Hall overlooks the water and houses the Thorndike Library, the Blair-Tyson Dining Hall (Take-A-Break) and kitchen, as well as the Admission Office.

Thorndike Library was named in honor of Robert Amory Thorndike (1900–1972) and his wife Elizabeth (1908–1992) in recognition of their support and contributions to the College.

Beginning Fund Balance	\$459,198
Net Return on Investments	\$26,687
Contributions	—
Less Allocations/Withdrawals	-\$20,286
Ending Fund Balance	\$465,599

The Turrets

The Turrets was designed for John J. Emery of New York in 1893 by Bruce Price, designer of Québec City's famous Château Frontenac. In 1975 The Turrets was placed on the National Register of Historic Places, and is still one of the most important examples of cottage-era architecture in Maine. The Turrets currently houses classrooms and administrative and faculty offices.

Beginning Fund Balance	\$292,787
Net Return on Investments	\$17,016
Contributions	—
Less Allocations/Withdrawals	-\$12,934
Ending Fund Balance	\$296,869

General Unrestricted Endowment

Beginning Fund Balance	\$3,309,653
Net Return on Investments	\$194,315
Contributions	\$60,125
Less Allocations/Withdrawals	-\$100,307
Ending Fund Balance	\$3,463,786

The general unrestricted endowment is primarily comprised of gifts to the College, which the trustees have designated to be part of the endowment. The normal 4.8–5% drawn down rate is applied and allocated to the general operations of the College, and if needed, with board approval special allocations can be made.

New Endowment Accounts



We celebrate the following new endowment accounts established in 2015:

- Diana Davis Spencer Hatchery
- Cox Protectorate Fund

These funds were established in FY14. Endowed funds are individually reported, once fully vested.

- Fund for Maine Islands
- Deering Endowment
- Performing Arts Chair
- Computer Science Chair

College of the Atlantic's Development Office

If this book has inspired you to learn more about possible investment opportunities, please let us know. Contact the Development Office at 207-801-5620. You can also learn more about College of the Atlantic's endowment needs and make a gift online at www.coa.edu/donatenow.

College of the Atlantic's Investment Committee

Hank Schmelzer, Chair
Les Brewer
Gifford Combs
Amy Falls
Robert Milotte
Brooke Parish

Tony Robinson
Steve Sullens
Melissa Cook
Andy Griffiths
William Thorndike, *ex officio*
Darron Collins, *ex officio*



COLLEGE OF THE ATLANTIC
105 EDEN STREET
BAR HARBOR, ME 04609
WWW.COA.EDU

